

Anti-PTGR1 Polyclonal Antibody

Cat: K110227P

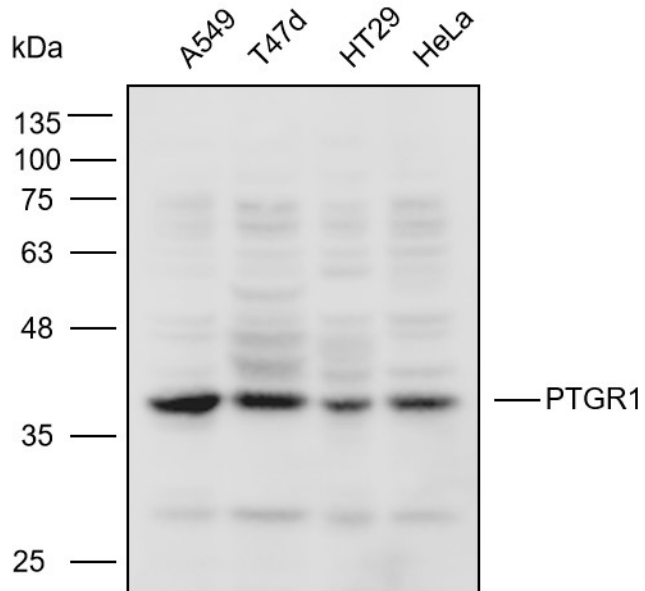
Summary:

【Product name】 : Anti-PTGR1 antibody	【Source】 : Rabbit
【Isotype】 : IgG	【Species reactivity】 : Human
【Swiss Prot】 : Q14914	【Gene ID】 : 22949
【Calculated】 : MW:33/36kDa	【Observed】 : MW:38kDa
【Purification】 : Affinity purification	
【Tested applications】 : WB	
【Recommended dilution】 : WB 1:1000-3000.	
【WB Positive sample】 : ,A549,T47D,HT-29,HeLa	
【Subcellular location】 : Cytoplasm	
【Immunogen】 : A synthetic peptide of human PTGR1	
【Storage】 : Shipped at 4°C. Upon delivery aliquot and store at -20°C	

Background:

Functions as 15-oxo-prostaglandin 13-reductase and acts on 15-oxo-PGE1, 15-oxo-PGE2 and 15-oxo-PGE2-alpha. Has no activity towards PGE1, PGE2 and PGE2-alpha (By similarity). Catalyzes the conversion of leukotriene B4 into its biologically less active metabolite, 12-oxo-leukotriene B4. This is an initial and key step of metabolic inactivation of leukotriene B4.

Verified picture



Western blot analysis with PTGR1 antibody diluted at 1:2000; Lane: A549, T47D, HT-29, HeLa