

# Anti-SEMA3B Polyclonal Antibody

Cat: K110235P

## Summary:

---

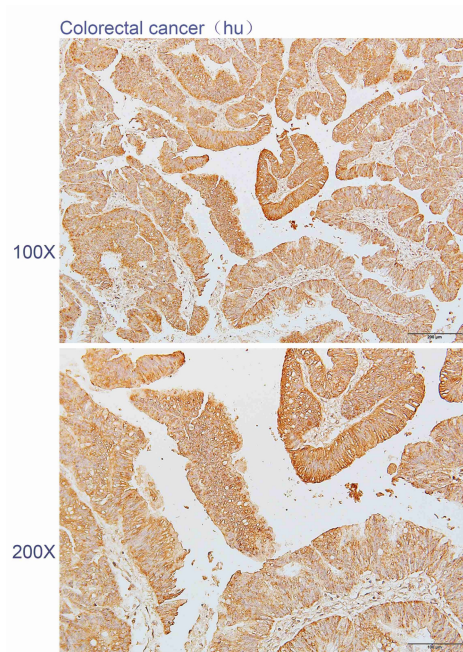
- 【Product name】** : Anti-SEMA3B antibody                      **【Source】** : Rabbit
- 【Isotype】** : IgG    **【Species reactivity】** : Human Mouse
- 【Swiss Prot】** : Q13214    **【Gene ID】** : 7869
- 【Calculated】** : MW:83kDa
- 【Purification】** : Octanoic acid-ammonium sulfate precipitation
- 【Tested applications】** : IHC
- 【Recommended dilution】** : IHC 1:50-200.
- 【IHC Positive sample】** : Colorectal cancer
- 【Subcellular location】** : Cytoplasm
- 【Immunogen】** : A synthetic peptide of human SEMA3B
- 【Storage】** : Shipped at 4°C. Upon delivery aliquot and store at -20°C

## Background:

---

The protein encoded by this gene belongs to the class-3 semaphorin/collapsin family, whose members function in growth cone guidance during neuronal development. This family member inhibits axonal extension and has been shown to act as a tumor suppressor by inducing apoptosis. Alternative splicing of this gene results in multiple transcript variants.

## Verified picture



Immunohistochemistry of paraffin-embedded Colorectal cancer using SEMA3B antibody diluted at 1:80