

Anti-MRPS26 Polyclonal Antibody

Cat: K110238P

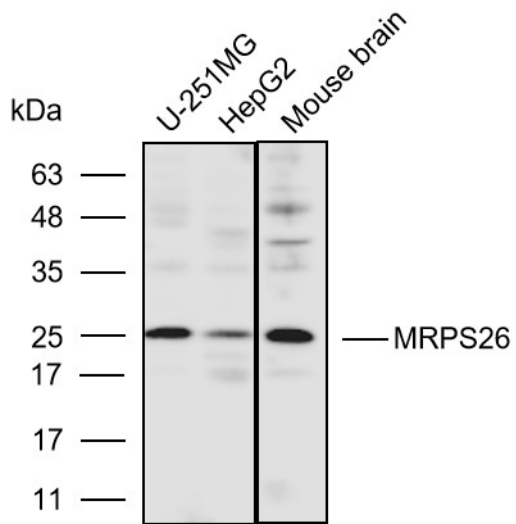
Summary:

【Product name】 : Anti-MRPS26 antibody	【Source】 : Rabbit
【Isotype】 : IgG	【Species reactivity】 : Human Mouse
【Swiss Prot】 : Q9BYN8	【Gene ID】 : 64949
【Calculated】 : MW:24kDa	【Observed】 : MW:25kDa
【Purification】 : Octanoic acid-ammonium sulfate precipitation	
【Tested applications】 : WB	
【Recommended dilution】 : WB 1:1000-3000.	
【WB Positive sample】 : U251MG,HepG2,Mouse brain	
【Subcellular location】 : Cytoplasm	
【Immunogen】 : A synthetic peptide of human MRPS26	
【Storage】 : Shipped at 4°C. Upon delivery aliquot and store at -20°C	

Background:

Mammalian mitochondrial ribosomal proteins are encoded by nuclear genes and help in protein synthesis within the mitochondrion. Mitochondrial ribosomes (mitoribosomes) consist of a small 28S subunit and a large 39S subunit. They have an estimated 75% protein to rRNA composition compared to prokaryotic ribosomes, where this ratio is reversed. Another difference between mammalian mitoribosomes and prokaryotic ribosomes is that the latter contain a 5S rRNA. Among different species, the proteins comprising the mitoribosome differ greatly in sequence, and sometimes in biochemical properties, which prevents easy recognition by sequence homology. This gene encodes a 28S subunit protein. This gene lies adjacent to and downstream of the gonadotropin-releasing hormone precursor gene.

Verified picture



Western blot analysis with MRPS26 antibody diluted at 1:2000; Lane: U251MG, HepG2, Mouse brain