

Anti-ABCF2 Polyclonal Antibody

Cat: K110243P

Summary:

【Product name】 : Anti-ABCF2 antibody

【Source】 : Rabbit

【Isotype】 : IgG

【Species reactivity】 : Human Mouse Rat

Predicted: Cow

【Swiss Prot】 : Q9UG63

【Gene ID】 : 10061

【Calculated】 : MW:71/72kDa

【Purification】 : Octanoic acid-ammonium sulfate precipitation

【Tested applications】 : IHC

【Recommended dilution】 : IHC 1:50-200.

【IHC Positive sample】 : Renal cancer

【Subcellular location】 : Cytoplasm

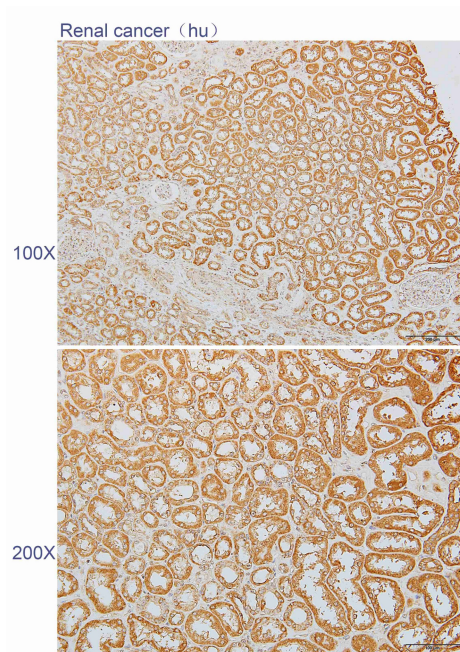
【Immunogen】 : A synthetic peptide of human ABCF2

【Storage】 : Shipped at 4°C. Upon delivery aliquot and store at -20°C

Background:

This gene encodes a member of the ATP-binding cassette (ABC) transporter superfamily. ATP-binding cassette proteins transport various molecules across extra- and intracellular membranes. Alterations in this gene may be involved in cancer progression. Alternative splicing results in multiple transcript variants. Related pseudogenes have been identified on chromosomes 3 and 7.

Verified picture



Immunohistochemistry of paraffin-embedded Renal cancer using ABCF2 antibody diluted at 1:80