

## Anti-CDH6 Polyclonal Antibody

Cat: K110246P

### Summary:

---

**【Product name】** : Anti-CDH6 antibody

**【Source】** : Rabbit

**【Isotype】** : IgG

**【Species reactivity】** : Human Mouse Rat

Predicted: Cow

**【Swiss Prot】** : P55285

**【Gene ID】** : 1004

**【Calculated】** : MW:74/88kDa

**【Observed】** : MW:120kDa

**【Purification】** : Affinity purification

**【Tested applications】** : WB

**【Recommended dilution】** : WB 1:1000-3000.

**【WB Positive sample】** : Mouse brain,Rat brain

**【Subcellular location】** : Cytoplasm Cell membrane

**【Immunogen】** : A synthetic peptide of human CDH6

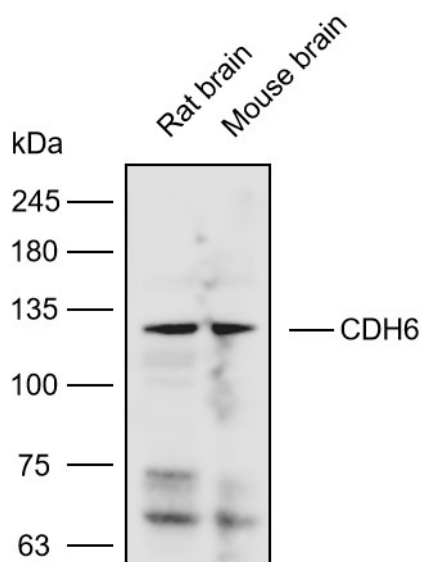
**【Storage】** : Shipped at 4°C. Upon delivery aliquot and store at -20°C

### Background:

---

This gene encodes a member of the cadherin superfamily. Cadherins are membrane glycoproteins that mediate homophilic cell-cell adhesion and play critical roles in cell differentiation and morphogenesis. The encoded protein is a type II cadherin and may play a role in kidney development as well as endometrium and placenta formation. Decreased expression of this gene may be associated with tumor growth and metastasis.

## Verified picture



Western blot analysis with CDH6 antibody diluted at  
1:2000; Lane: Mouse brain, Rat brain