

## Anti-AP2A2 Polyclonal Antibody

Cat: K110250P

### Summary:

---

**【Product name】** : Anti-AP2A2 antibody

**【Source】** : Rabbit

**【Isotype】** : IgG

**【Species reactivity】** : Human Mouse Rat

Predicted: Cow

**【Swiss Prot】** : O94973

**【Gene ID】** : 161

**【Calculated】** : MW:73/104kDa

**【Observed】** : MW:104kDa

**【Purification】** : Affinity purification

**【Tested applications】** : WB

**【Recommended dilution】** : WB 1:1000-3000.

**【WB Positive sample】** : Mouse brain,Rat brain

**【Subcellular location】** : Cytoplasm

**【Immunogen】** : A synthetic peptide of human AP2A2

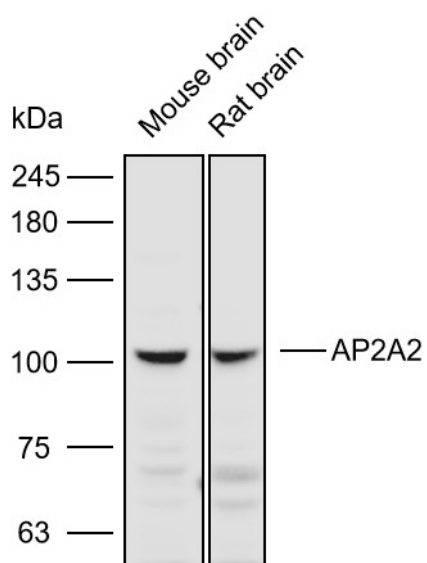
**【Storage】** : Shipped at 4°C. Upon delivery aliquot and store at -20°C

### Background:

---

The protein encoded by this gene is a subunit of the AP-2 adaptor protein complex, which is involved in linking lipid and protein membrane components with the clathrin lattice. This interaction supports the formation of clathrin-coated vesicles, and the encoded subunit aids in the process by binding polyphosphoinositide-containing lipids in the cell membrane.

## Verified picture



Western blot analysis with AP2A2 antibody diluted at 1:2000; Lane: Mouse brain, Rat brain