

Anti-POM121 Polyclonal Antibody

Cat: K110254P

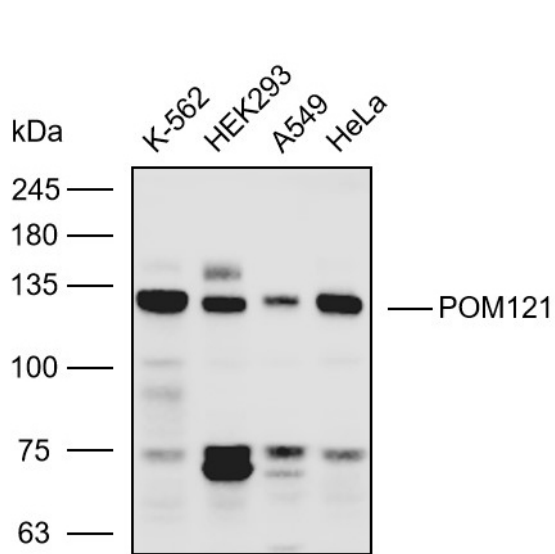
Summary:

【Product name】 : Anti-POM121 antibody	【Source】 : Rabbit
【Isotype】 : IgG	【Species reactivity】 : Human Mouse Rat Predicted:Cow
【Swiss Prot】 : Q96HA1	【Gene ID】 : 9883
【Calculated】 : MW:99/101/128kDa	【Observed】 : MW:130kDa
【Purification】 : Affinity purification	
【Tested applications】 : WB IHC	
【Recommended dilution】 : WB 1:2000-5000. IHC 1:50-200.	
【WB Positive sample】 : K562,Hek293,A549,HeLa	
【IHC Positive sample】 : Human colorectal cancer	
【Subcellular location】 : Cytoplasm Nucleus Cell membrane	
【Immunogen】 : A synthetic peptide of human POM121	
【Storage】 : Shipped at 4°C. Upon delivery aliquot and store at -20°C	

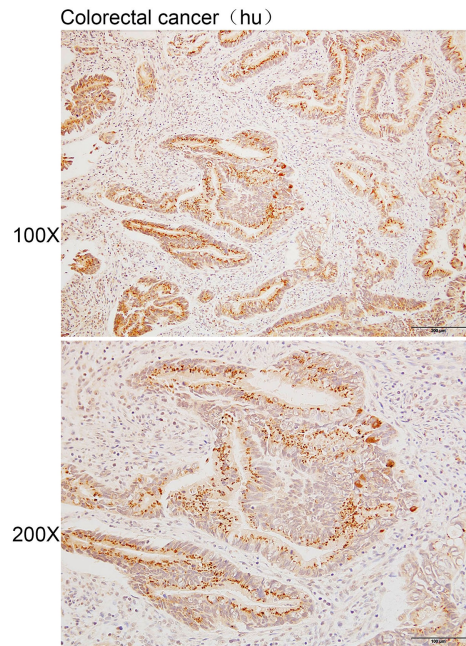
Background:

Essential component of the nuclear pore complex (NPC). The repeat-containing domain may be involved in anchoring components of the pore complex to the pore membrane. When overexpressed in cells induces the formation of cytoplasmic annulate lamellae (AL).

Verified picture



Western blot analysis with POM121 antibody diluted at 1:3000; Lane: K562, Hek293, A549, HeLa



Immunohistochemistry of paraffin-embedded Human colorectal cancer using POM121 antibody diluted at 1:80