

## Anti-DYRK1B Polyclonal Antibody

Cat: K110261P

### Summary:

---

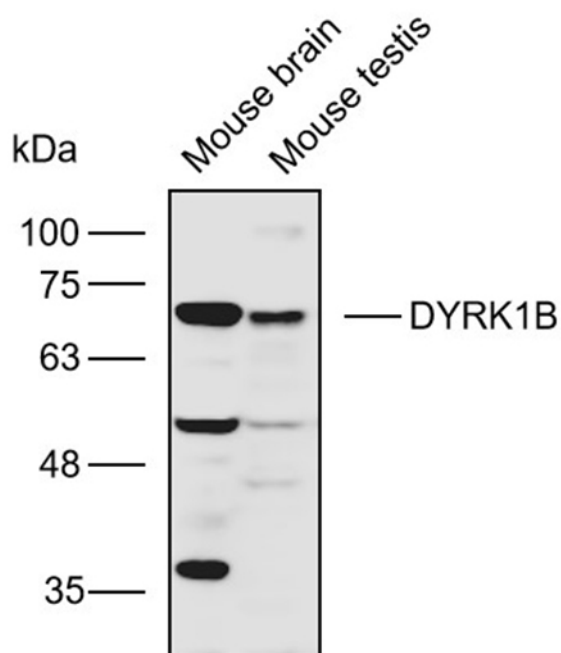
<b>【Product name】</b> : Anti-DYRK1B antibody	<b>【Source】</b> : Rabbit
<b>【Isotype】</b> : IgG	<b>【Species reactivity】</b> : Human Mouse Rat Predicted:Zebrafish Cow
<b>【Swiss Prot】</b> : Q9Y463	<b>【Gene ID】</b> : 9149
<b>【Calculated】</b> : MW:65/66/69kDa	<b>【Observed】</b> : MW:70kDa
<b>【Purification】</b> : Affinity purification	
<b>【Tested applications】</b> : WB	
<b>【Recommended dilution】</b> : WB 1:1000-3000.	
<b>【WB Positive sample】</b> : Mouse brain,Mouse testis	
<b>【Subcellular location】</b> : Cytoplasm	
<b>【Immunogen】</b> : A synthetic peptide of human DYRK1B	
<b>【Storage】</b> : Shipped at 4°C. Upon delivery aliquot and store at -20°C	

### Background:

---

Dual-specificity kinase which possesses both serine/threonine and tyrosine kinase activities. Enhances the transcriptional activity of TCF1/HNF1A and FOXO1. Inhibits epithelial cell migration. Mediates colon carcinoma cell survival in mitogen-poor environments. Inhibits the SHH and WNT1 pathways, thereby enhancing adipogenesis. In addition, promotes expression of the gluconeogenic enzyme glucose-6-phosphatase (G6PC).

## Verified picture



Western blot analysis with DYRK1B antibody diluted at 1:2000; Lane: Mouse brain, Mouse testis