

Anti-SORBS2 Polyclonal Antibody

Cat: K110265P

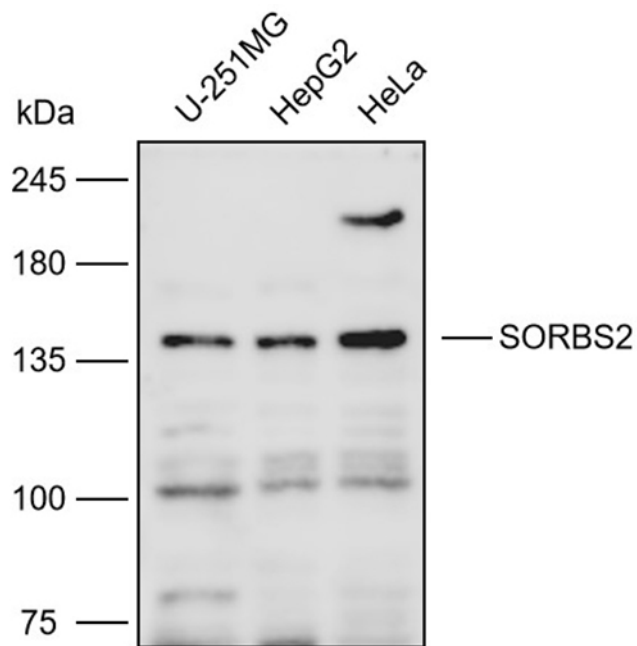
Summary:

【Product name】 : Anti-SORBS2 antibody	【Source】 : Rabbit
【Isotype】 : IgG	【Species reactivity】 : Human Mouse Rat Predicted:Zebrafish
【Swiss Prot】 : O94875	【Gene ID】 : 8470
【Calculated】 : MW:18/75/90/124/134kDa	【Observed】 : MW:140kDa
【Purification】 : Affinity purification	
【Tested applications】 : WB	
【Recommended dilution】 : WB 1:1000-3000.	
【WB Positive sample】 : U-251,HepG2,HeLa	
【Subcellular location】 : Cytoplasm Cell membrane Nucleus	
【Immunogen】 : A synthetic peptide of human SORBS2	
【Storage】 : Shipped at 4°C. Upon delivery aliquot and store at -20°C	

Background:

Adapter protein that plays a role in the assembling of signaling complexes, being a link between ABL kinases and actin cytoskeleton. Can form complex with ABL1 and CBL, thus promoting ubiquitination and degradation of ABL1. May play a role in the regulation of pancreatic cell adhesion, possibly by acting on WASF1 phosphorylation, enhancing phosphorylation by ABL1, as well as dephosphorylation by PTPN12 (PubMed:18559503). Isoform 6 increases water and sodium absorption in the intestine and gall-bladder.

Verified picture



Western blot analysis with SORBS2 antibody diluted at 1:2000; Lane: U-251, HepG2, HeLa