

## Anti-SORBS2 Polyclonal Antibody

Cat: K110266P

### Summary:

---

**【Product name】** : Anti-SORBS2 antibody

**【Source】** : Rabbit

**【Isotype】** : IgG

**【Species reactivity】** : Human Mouse Rat

Predicted:Zebrafish

**【Swiss Prot】** : O94875

**【Gene ID】** : 8470

**【Calculated】** : MW:18/75/90/124/134kDa

**【Purification】** : Octanoic acid-ammonium sulfate precipitation

**【Tested applications】** : IHC

**【Recommended dilution】** : IHC 1:100-300.

**【IHC Positive sample】** : Liver cancer

**【Subcellular location】** : Cytoplasm Cell membrane Nucleus

**【Immunogen】** : A synthetic peptide of human SORBS2

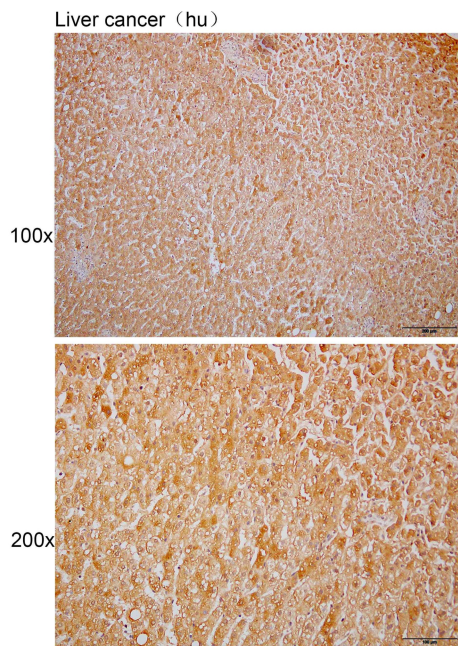
**【Storage】** : Shipped at 4°C. Upon delivery aliquot and store at -20°C

### Background:

---

Adapter protein that plays a role in the assembling of signaling complexes, being a link between ABL kinases and actin cytoskeleton. Can form complex with ABL1 and CBL, thus promoting ubiquitination and degradation of ABL1. May play a role in the regulation of pancreatic cell adhesion, possibly by acting on WASF1 phosphorylation, enhancing phosphorylation by ABL1, as well as dephosphorylation by PTPN12 (PubMed:18559503). Isoform 6 increases water and sodium absorption in the intestine and gall-bladder.

## Verified picture



Immunohistochemistry of paraffin-embedded Liver cancer using SORBS2 antibody diluted at 1:200