

## Anti-FOSL1 Polyclonal Antibody

Cat: K110273P

### Summary:

---

**【Product name】** : Anti-FOSL1 antibody

**【Source】** : Rabbit

**【Isotype】** : IgG

**【Species reactivity】** : Human Mouse Rat

Predicted:Cow

**【Swiss Prot】** : P15407

**【Gene ID】** : 8061

**【Calculated】** : MW:17/29kDa

**【Observed】** : MW:28kDa

**【Purification】** : Affinity purification

**【Tested applications】** : WB

**【Recommended dilution】** : WB 1:1000-3000.

**【WB Positive sample】** : HL60,Mouse liver

**【Subcellular location】** : Nucleus

**【Immunogen】** : A synthetic peptide of human FOSL1

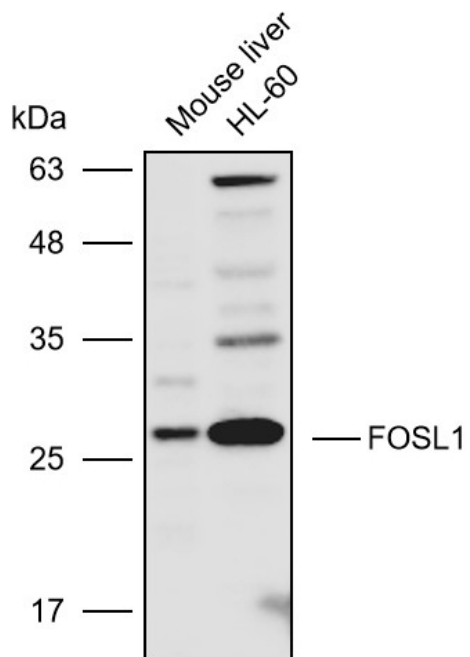
**【Storage】** : Shipped at 4°C. Upon delivery aliquot and store at -20°C

### Background:

---

The Fos gene family consists of 4 members: FOS, FOSB, FOSL1, and FOSL2. These genes encode leucine zipper proteins that can dimerize with proteins of the JUN family, thereby forming the transcription factor complex AP-1. As such, the FOS proteins have been implicated as regulators of cell proliferation, differentiation, and transformation. Several transcript variants encoding different isoforms have been found for this gene.

## Verified picture



Western blot analysis with FOSL1 antibody diluted at  
1:2000; Lane: HL60, Mouse liver