

Anti-PYCR3 Polyclonal Antibody

Cat: K110275P

Summary:

【Product name】 : Anti-PYCR3 antibody

【Source】 : Rabbit

【Isotype】 : IgG

【Species reactivity】 : Human Mouse Rat

Predicted:Zebrafish

【Swiss Prot】 : Q53H96

【Gene ID】 : 65263

【Calculated】 : MW:26/29kDa

【Purification】 : Affinity purification

【Tested applications】 : IHC

【Recommended dilution】 : IHC 1:50-200.

【IHC Positive sample】 : Breast cancer

【Subcellular location】 : Cytoplasm

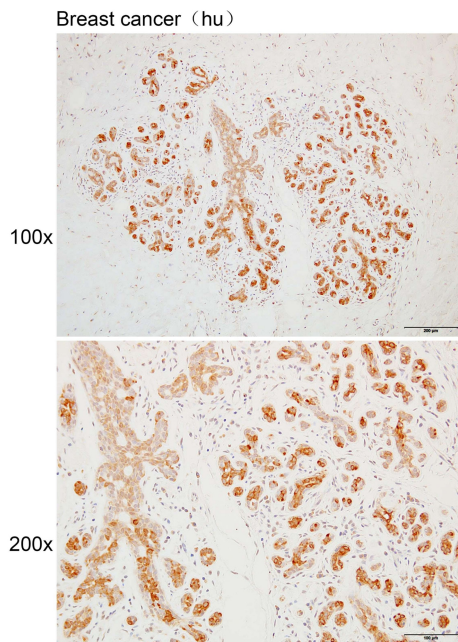
【Immunogen】 : A synthetic peptide of human PYCR3

【Storage】 : Shipped at 4°C. Upon delivery aliquot and store at -20°C

Background:

Enzyme that catalyzes the last step in proline biosynthesis. Proline is synthesized from either glutamate or ornithine; both are converted to pyrroline-5-carboxylate (P5C), and then to proline via pyrroline-5-carboxylate reductases (PYCRs). PYCR3 is exclusively linked to the conversion of ornithine to proline.

Verified picture



Immunohistochemistry of paraffin-embedded Breast cancer
using PYCR3 antibody diluted at 1:100