

Anti-RSPO1 Polyclonal Antibody

Cat: K110280P

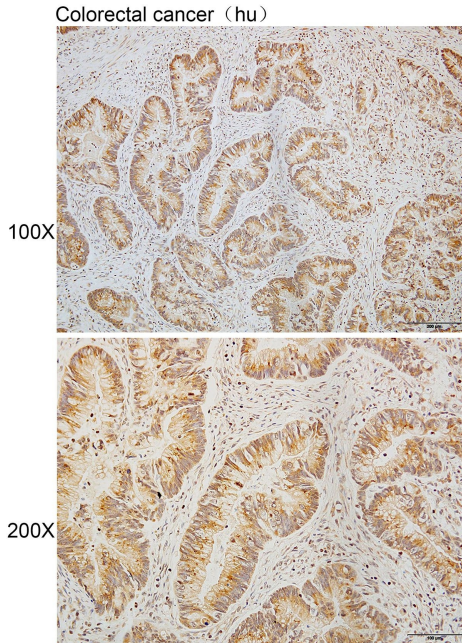
Summary:

【Product name】 : Anti-RSPO1 antibody	【Source】 : Rabbit
【Isotype】 : IgG	【Species reactivity】 : Human Mouse
【Swiss Prot】 : Q2MKA7	【Gene ID】 : 284654
【Calculated】 : MW:22/26/29kDa	
【Purification】 : Affinity purification	
【Tested applications】 : IHC	
【Recommended dilution】 : IHC 1:50-200.	
【IHC Positive sample】 : Human colorectal cancer	
【Subcellular location】 : Secreted	
【Immunogen】 : A synthetic peptide of RSPO1	
【Storage】 : Shipped at 4°C. Upon delivery aliquot and store at -20°C	

Background:

This gene encodes a secreted activator protein with two cysteine-rich, furin-like domains and one thrombospondin type 1 domain. The encoded protein is a ligand for leucine-rich repeat-containing G-protein coupled receptors (LGR proteins) and positively regulates the Wnt signaling pathway. In mice, the protein induces the rapid onset of crypt cell proliferation and increases intestinal epithelial healing, providing a protective effect against chemotherapy-induced adverse effects. Alternative splicing results in multiple transcript variants.

Verified picture



Immunohistochemistry of paraffin-embedded
Human colorectal cancer using RSPO1 antibody
diluted at 1:80