

## Anti-TLN1 Polyclonal Antibody

Cat: K110282P

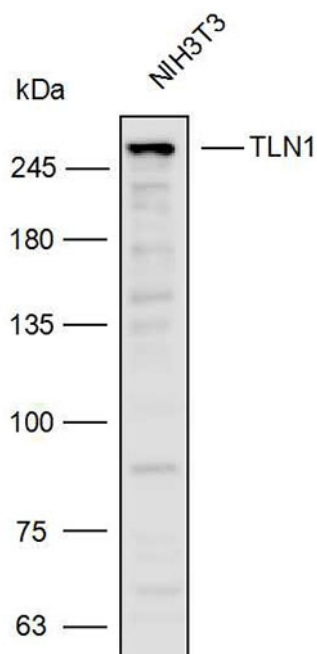
### Summary:

【Product name】: Anti-TLN1 antibody	【Source】: Rabbit
【Isotype】: IgG	【Species reactivity】: Human Mouse
【Swiss Prot】: Q9Y490	【Gene ID】: 7094
【Calculated】: MW:270kDa	【Observed】: MW:270kDa
【Purification】: Affinity purification	
【Tested applications】: WB IHC	
【Recommended dilution】: WB 1:1000-3000. IHC 1:50-200.	
【WB Positive sample】: NIH3T3	
【IHC Positive sample】: Human breast cancer	
【Subcellular location】: Cell membrane Secreted	
【Immunogen】: A synthetic peptide of TLN1	
【Storage】: Shipped at 4°C. Upon delivery aliquot and store at -20°C	

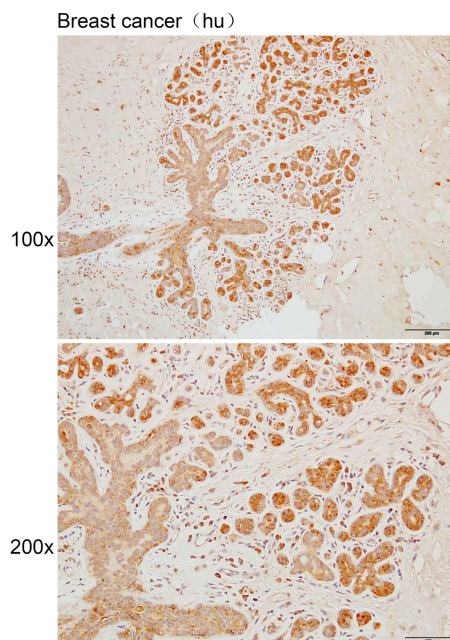
### Background:

This gene encodes a cytoskeletal protein that is concentrated in areas of cell-substratum and cell-cell contacts. The encoded protein plays a significant role in the assembly of actin filaments and in spreading and migration of various cell types, including fibroblasts and osteoclasts. It codistributes with integrins in the cell surface membrane in order to assist in the attachment of adherent cells to extracellular matrices and of lymphocytes to other cells. The N-terminus of this protein contains elements for localization to cell-extracellular matrix junctions. The C-terminus contains binding sites for proteins such as beta-1-integrin, actin, and vinculin.

## Verified picture



Western blot analysis with TLN1 antibody diluted at 1:2000; Lane: NIH/3T3



Immunohistochemistry of paraffin-embedded Human breast cancer using TLN1 antibody diluted at 1:100