

Anti-ADRA2 Polyclonal Antibody

Cat: K110287P

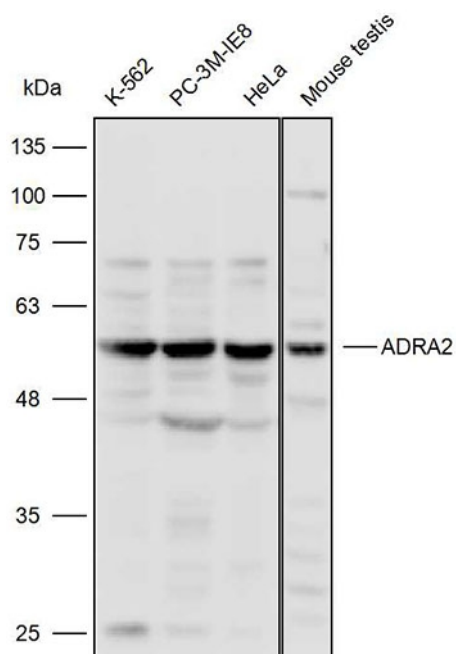
Summary:

【Product name】 : Anti-ADRA2antibody	【Source】 : Rabbit
【Isotype】 : IgG	【Species reactivity】 : Human Mouse Rat Predicted:Cow Pig
【Swiss Prot】 : P08913	【Gene ID】 : 150
【Calculated】 : MW:51kDa	【Observed】 : MW:56kDa
【Purification】 : Affinity purification	
【Tested applications】 : WB IHC	
【Recommended dilution】 : WB 1:1000-3000. IHC 1:50-200.	
【WB Positive sample】 : K-562,PC-3M-IE8M,HeLa,Mouse testis	
【IHC Positive sample】 : Human pancreatic cancer	
【Subcellular location】 : Cell membrane	
【Immunogen】 : A synthetic peptide of ADRA2	
【Storage】 : Shipped at 4°C. Upon delivery aliquot and store at -20°C	

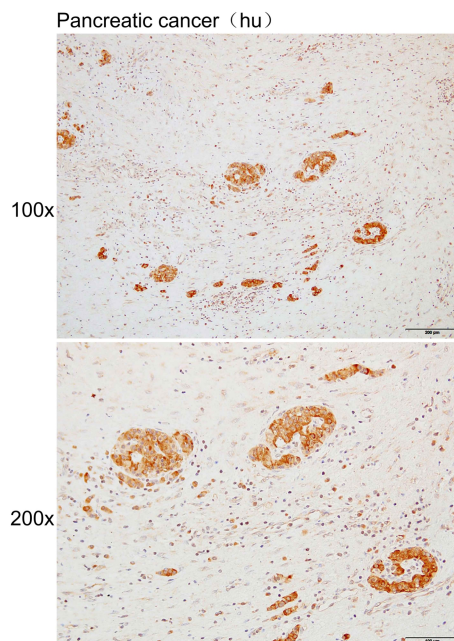
Background:

Alpha-2-adrenergic receptors are members of the G protein-coupled receptor superfamily. They include 3 highly homologous subtypes: alpha2A, alpha2B, and alpha2C. These receptors have a critical role in regulating neurotransmitter release from sympathetic nerves and from adrenergic neurons in the central nervous system. Studies in mouse revealed that both the alpha2A and alpha2C subtypes were required for normal presynaptic control of transmitter release from sympathetic nerves in the heart and from central noradrenergic neurons; the alpha2A subtype inhibited transmitter release at high stimulation frequencies, whereas the alpha2C subtype modulated neurotransmission at lower levels of nerve activity. This gene encodes alpha2A subtype and it contains no introns in either its coding or untranslated sequences.

Verified picture



Western blot analysis with ADRA2 antibody diluted at 1:2000; Lane: K-562, PC-3M-IE8M, HeLa, Mouse testis



Immunohistochemistry of paraffin-embedded Human pancreatic cancer using ADRA2 antibody diluted at 1:100