

## Anti-CHP2 Polyclonal Antibody

Cat: K110288P

### Summary:

---

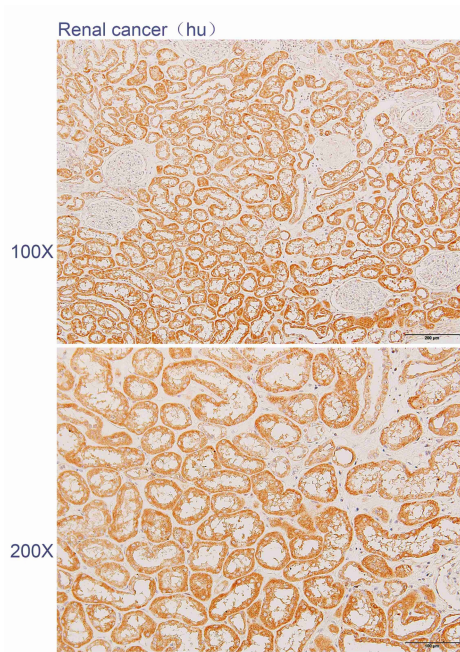
- 【Product name】** : Anti-CHP2 antibody                      **【Source】** : Rabbit
- 【Isotype】** : IgG    **【Species reactivity】** : Human Mouse Rat
- 【Swiss Prot】** : O43745    **【Gene ID】** : 63928
- 【Calculated】** : MW:22kDa
- 【Purification】** : Octanoic acid-ammonium sulfate precipitation
- 【Tested applications】** : IHC
- 【Recommended dilution】** : IHC 1:100-300.
- 【IHC Positive sample】** : Human renal cancer
- 【Subcellular location】** : Cytoplasm Nucleus
- 【Immunogen】** : A synthetic peptide of CHP2
- 【Storage】** : Shipped at 4°C. Upon delivery aliquot and store at -20°C

### Background:

---

Functions as an integral cofactor in cell pH regulation by controlling plasma membrane-type Na<sup>+</sup>/H<sup>+</sup> exchange activity. Binds to and activates SLC9A1/NHE1 in a serum-independent manner, thus increasing pH and protecting cells from serum deprivation-induced death. Also plays a role in the regulation of cell proliferation and tumor growth by increasing the phosphatase activity of PPP3CA in a calcium-dependent manner. Activator of the calcineurin/NFAT signaling pathway. Involved in the cytoplasmic translocation of the transcription factor NFATC3 to the nucleus.

## Verified picture



Immunohistochemistry of paraffin-embedded  
Human renal cancer using CHP2 antibody  
diluted at 1:200