

Anti-MRPL22 Polyclonal Antibody

Cat: K110290P

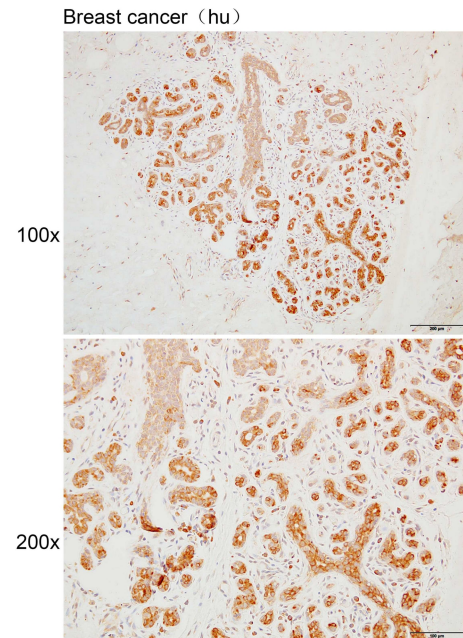
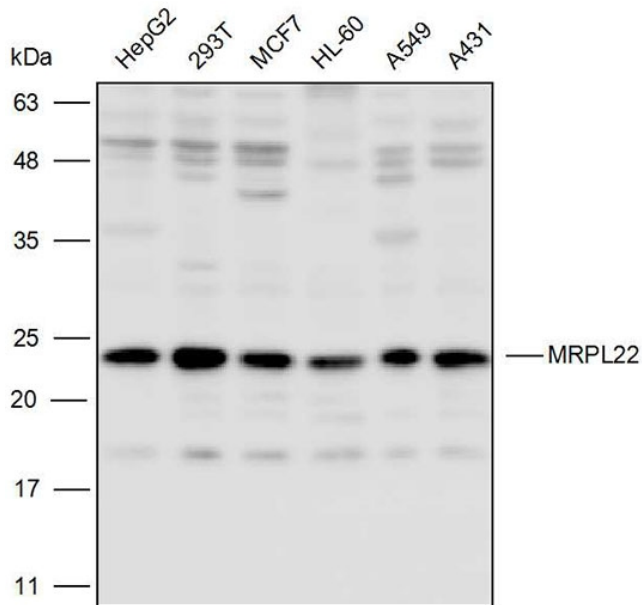
Summary:

【Product name】 : Anti-MRPL22antibody	【Source】 : Rabbit
【Isotype】 : IgG	【Species reactivity】 : Human Mouse Rat Predicted:Cow
【Swiss Prot】 : Q9NWU5	【Gene ID】 : 29093
【Calculated】 : MW:14/23kDa	【Observed】 : MW:24kDa
【Purification】 : Affinity purification	
【Tested applications】 : WB IHC	
【Recommended dilution】 : WB 1:1000-3000. IHC 1:50-200.	
【WB Positive sample】 : HepG2,293T,MCF7,HL60,A549,A431	
【IHC Positive sample】 : Human breast cancer	
【Subcellular location】 : Cytoplasm Cell membrane	
【Immunogen】 : A synthetic peptide of MRPL22	
【Storage】 : Shipped at 4°C. Upon delivery aliquot and store at -20°C	

Background:

Mammalian mitochondrial ribosomal proteins are encoded by nuclear genes and help in protein synthesis within the mitochondrion. Mitochondrial ribosomes (mitoribosomes) consist of a small 28S subunit and a large 39S subunit. They have an estimated 75% protein to rRNA composition compared to prokaryotic ribosomes, where this ratio is reversed. Another difference between mammalian mitoribosomes and prokaryotic ribosomes is that the latter contain a 5S rRNA. Among different species, the proteins comprising the mitoribosome differ greatly in sequence, and sometimes in biochemical properties, which prevents easy recognition by sequence homology. This gene encodes a 39S subunit protein that belongs to the L22 ribosomal protein family. A pseudogene corresponding to this gene is found on chromosome 4q. Two transcript variants encoding different isoforms have been found for this gene.

Verified picture



Immunohistochemistry of paraffin-embedded breast cancer using MRPL22 antibody diluted at 1:100