

Anti-RAB2A Polyclonal Antibody

Cat: K110291P

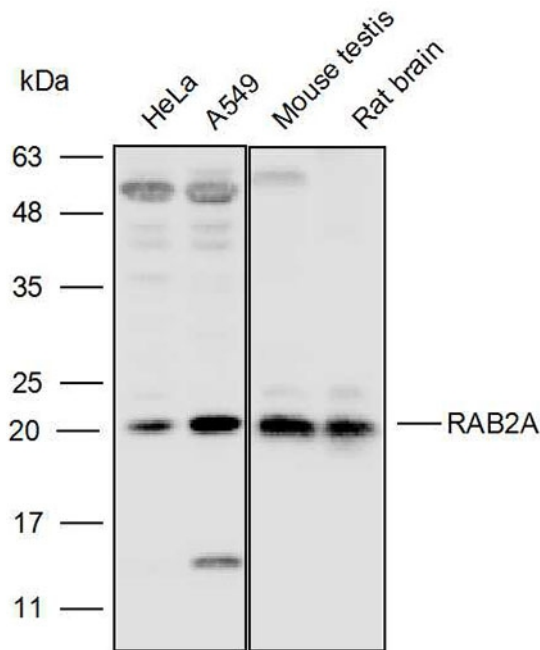
Summary:

【Product name】 : Anti-RAB2Aantibody	【Source】 : Rabbit
【Isotype】 : IgG	【Species reactivity】 : Human Mouse Rat
【Swiss Prot】 : P61019	【Gene ID】 : 5862
【Calculated】 : MW:21/24kDa	【Observed】 : MW:21kDa
【Purification】 : Octanoic acid-ammonium sulfate precipitation	
【Tested applications】 : WB IHC	
【Recommended dilution】 : WB 1:1000-3000. IHC 1:100-300.	
【WB Positive sample】 : HeLa,A549,Mouse testis,Rat brain	
【IHC Positive sample】 : Human colorectal cancer	
【Subcellular location】 : Cytoplasm	
【Immunogen】 : A synthetic peptide of RAB2A	
【Storage】 : Shipped at 4°C. Upon delivery aliquot and store at -20°C	

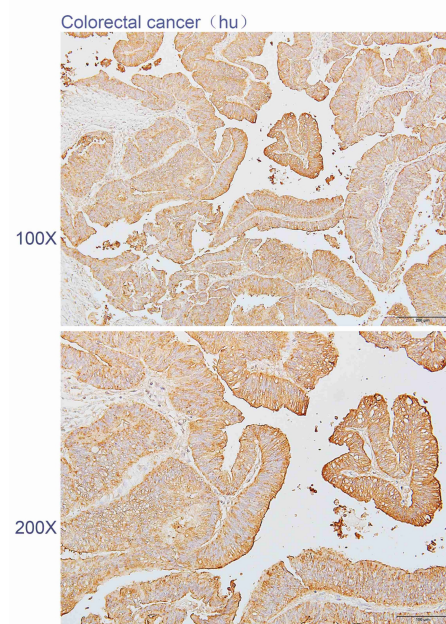
Background:

The protein encoded by this gene belongs to the Rab family, members of which are small molecular weight guanosine triphosphatases (GTPases) that contain highly conserved domains involved in GTP binding and hydrolysis. The Rabs are membrane-bound proteins, involved in vesicular fusion and trafficking. This protein is a resident of pre-Golgi intermediates, and is required for protein transport from the endoplasmic reticulum (ER) to the Golgi complex. Alternatively spliced transcript variants encoding different isoforms have been found for this gene.

Verified picture



Western blot analysis with RAB2A antibody diluted at 1:2000; Lane: HeLa, A549, Mouse testis, Rat brain



Immunohistochemistry of paraffin-embedded Human colorectal cancer using RAB2A antibody diluted at 1:200