

## Anti-RAB5C Polyclonal Antibody

Cat: K110292P

### Summary:

---

**【Product name】** : Anti-RAB5C antibody

**【Source】** : Rabbit

**【Isotype】** : IgG

**【Species reactivity】** : Human Mouse

Predicted: Cow Dog

**【Swiss Prot】** : P51148

**【Gene ID】** : 5878

**【Calculated】** : MW:23/27kDa

**【Observed】** : MW:26kDa

**【Purification】** : Affinity purification

**【Tested applications】** : WB

**【Recommended dilution】** : WB 1:1000-3000.

**【WB Positive sample】** : Mouse pancreas

**【Subcellular location】** : Cytoplasm

**【Immunogen】** : A synthetic peptide of RAB5C

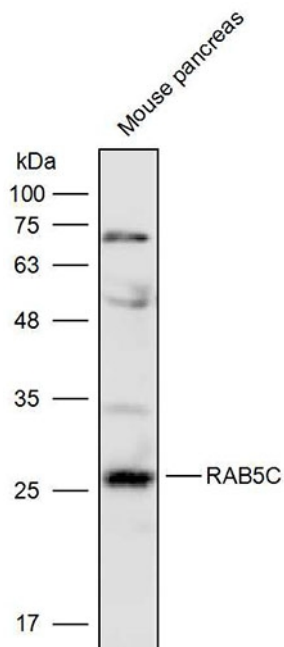
**【Storage】** : Shipped at 4°C. Upon delivery aliquot and store at -20°C

### Background:

---

Protein transport. Probably involved in vesicular traffic (By similarity).

## Verified picture



Western blot analysis with RAB5C antibody diluted at  
1:2000; Lane: Mouse pancreas