

Anti-YWHAE Polyclonal Antibody

Cat: K110297P

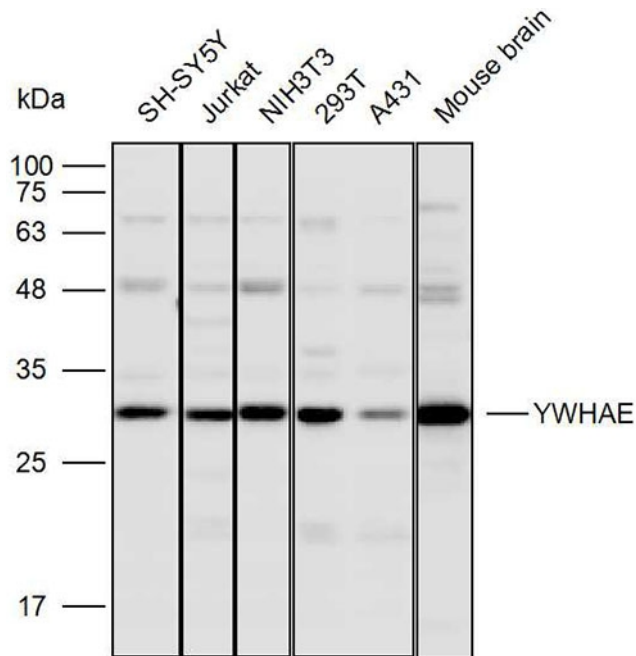
Summary:

【Product name】 : Anti-YWHAE antibody	【Source】 : Rabbit
【Isotype】 : IgG	【Species reactivity】 : Human Mouse Rat
【Swiss Prot】 : P62258	【Gene ID】 : 7531
【Calculated】 : MW:26/29kDa	【Observed】 : MW:29kDa
【Purification】 : Affinity purification	
【Tested applications】 : WB IHC	
【Recommended dilution】 : WB 1:2000-5000. IHC 1:50-200.	
【WB Positive sample】 : SH-SY5Y, Jurkat, NIH3T3, 293T, A431, Mouse brain	
【IHC Positive sample】 : Human colorectal cancer	
【Subcellular location】 : Cytoplasm Nucleus	
【Immunogen】 : A synthetic peptide of YWHAE	
【Storage】 : Shipped at 4°C. Upon delivery aliquot and store at -20°C	

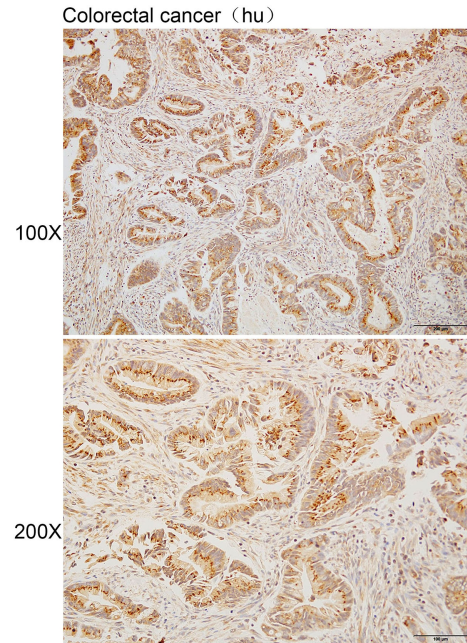
Background:

This gene product belongs to the 14-3-3 family of proteins which mediate signal transduction by binding to phosphoserine-containing proteins. This highly conserved protein family is found in both plants and mammals, and this protein is 100% identical to the mouse ortholog. It interacts with CDC25 phosphatases, RAF1 and IRS1 proteins, suggesting its role in diverse biochemical activities related to signal transduction, such as cell division and regulation of insulin sensitivity. It has also been implicated in the pathogenesis of small cell lung cancer. Two transcript variants, one protein-coding and the other non-protein-coding, have been found for this gene.

Verified picture



Western blot analysis with YWHAE antibody diluted at 1:3000; Lane: SH-SY5Y, Jurkat, NIH/3T3, 293T, A431, Mouse brain



Immunohistochemistry of paraffin-embedded colorectal cancer using YWHAE antibody diluted at 1:80