

Anti-MRPL46 Polyclonal Antibody

Cat: K110299P

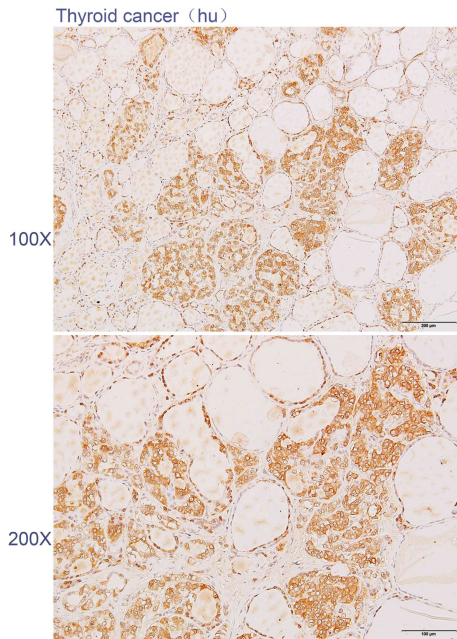
Summary:

- 【Product name】** : Anti-MRPL46 antibody **【Source】** : Rabbit
- 【Isotype】** : IgG **【Species reactivity】** : Human
- 【Swiss Prot】** : Q9H2W6 **【Gene ID】** : 26589
- 【Calculated】** : MW:31kDa
- 【Purification】** : Octanoic acid-ammonium sulfate precipitation
- 【Tested applications】** : IHC
- 【Recommended dilution】** : IHC 1:100-300.
- 【IHC Positive sample】** : Human thyroid cancer
- 【Subcellular location】** : Cytoplasm
- 【Immunogen】** : A synthetic peptide of MRPL46
- 【Storage】** : Shipped at 4°C. Upon delivery aliquot and store at -20°C

Background:

Mammalian mitochondrial ribosomal proteins are encoded by nuclear genes and help in protein synthesis within the mitochondrion. Mitochondrial ribosomes (mitoribosomes) consist of a small 28S subunit and a large 39S subunit. They have an estimated 75% protein to rRNA composition compared to prokaryotic ribosomes, where this ratio is reversed. Another difference between mammalian mitoribosomes and prokaryotic ribosomes is that the latter contain a 5S rRNA. Among different species, the proteins comprising the mitoribosome differ greatly in sequence, and sometimes in biochemical properties, which prevents easy recognition by sequence homology. This gene encodes a 39S subunit protein.

Verified picture



Immunohistochemistry of paraffin-embedded
Human thyroid cancer using MRPL46 antibody
diluted at 1:200