

## Anti-CHST6 Polyclonal Antibody

Cat: K110314P

### Summary:

---

**【Product name】** : Anti-CHST6 antibody

**【Source】** : Rabbit

**【Isotype】** : IgG

**【Species reactivity】** : Human

**【Swiss Prot】** : Q9GZX3

**【Gene ID】** : 4166

**【Calculated】** : MW:44kDa

**【Purification】** : Affinity purification

**【Tested applications】** : IHC

**【Recommended dilution】** : IHC 1:50-200.

**【IHC Positive sample】** : Human colorectal cancer

**【Subcellular location】** : Cytoplasm

**【Immunogen】** : A synthetic peptide of CHST6

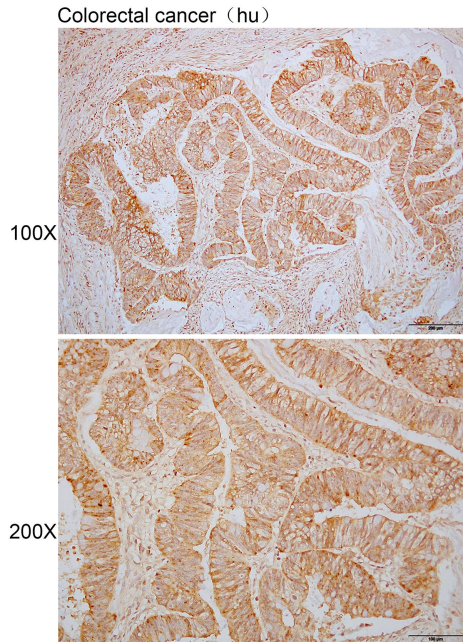
**【Storage】** : Shipped at 4°C. Upon delivery aliquot and store at -20°C

### Background:

---

The protein encoded by this gene is an enzyme that catalyzes the transfer of a sulfate group to the GlcNAc residues of keratan. Keratan sulfate helps maintain corneal transparency. Defects in this gene are a cause of macular corneal dystrophy (MCD).

## Verified picture



Immunohistochemistry of paraffin-embedded  
Human colorectal cancer using CHST6 antibody  
diluted at 1:80