

Anti-RRAGC Polyclonal Antibody

Cat: K110316P

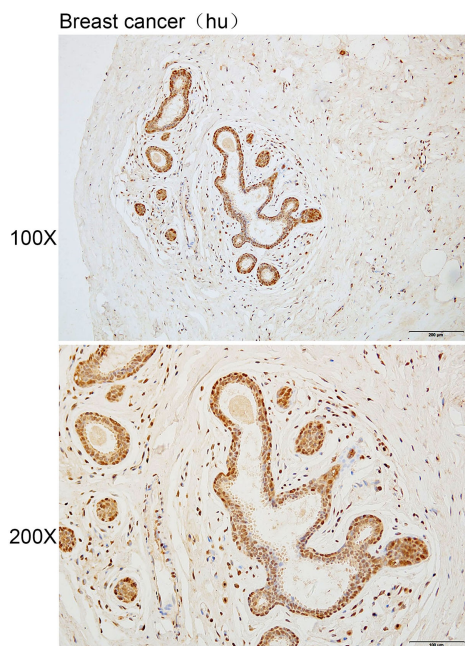
Summary:

| | |
|---|---|
| 【Product name】 : Anti-RRAGC antibody | 【Source】 : Rabbit |
| 【Isotype】 : IgG | 【Species reactivity】 : Human Mouse |
| 【Swiss Prot】 : Q9HB90 | 【Gene ID】 : 64121 |
| 【Calculated】 : MW:44kDa | |
| 【Purification】 : Affinity purification | |
| 【Tested applications】 : IHC | |
| 【Recommended dilution】 : IHC 1:50-200. | |
| 【IHC Positive sample】 : Human breast cancer | |
| 【Subcellular location】 : Nucleus | |
| 【Immunogen】 : A synthetic peptide of RRAGC | |
| 【Storage】 : Shipped at 4°C. Upon delivery aliquot and store at -20°C | |

Background:

This gene encodes a member of the GTR/RAG GTP-binding protein family. The encoded protein is a monomeric guanine nucleotide-binding protein which forms a heterodimer with RRAGA and RRAGB and is primarily localized to the cytoplasm. The encoded protein promotes intracellular localization of the mTOR complex. Alternative splicing results in multiple transcript variants.

Verified picture



Immunohistochemistry of paraffin-embedded
Human breast cancer using RRAGC antibody
diluted at 1:100