

## Anti-SERPINB4 Polyclonal Antibody

Cat: K110318P

### Summary:

---

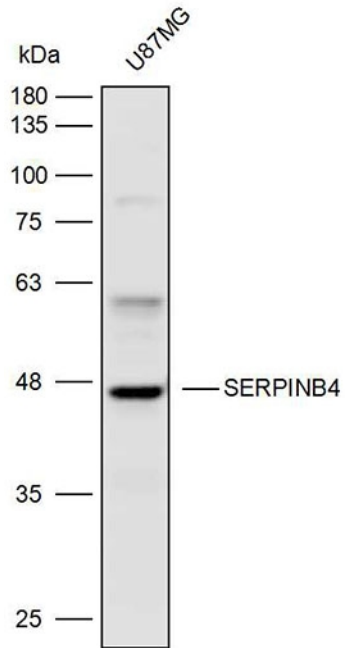
<b>【Product name】</b> : Anti-SERPINB4 antibody	<b>【Source】</b> : Rabbit
<b>【Isotype】</b> : IgG	<b>【Species reactivity】</b> : Human
<b>【Swiss Prot】</b> : P48594	<b>【Gene ID】</b> : 6318
<b>【Calculated】</b> : MW:45kDa	<b>【Observed】</b> : MW:47kDa
<b>【Purification】</b> : Affinity purification	
<b>【Tested applications】</b> : WB	
<b>【Recommended dilution】</b> : WB 1:1000-3000.	
<b>【WB Positive sample】</b> :U87MG	
<b>【Subcellular location】</b> : Cytoplasm Nucleus	
<b>【Immunogen】</b> : A synthetic peptide of SERPINB4	
<b>【Storage】</b> : Shipped at 4°C. Upon delivery aliquot and store at -20°C	

### Background:

---

The protein encoded by this gene is a member of the serpin family of serine protease inhibitors. The encoded protein is highly expressed in many tumor cells and can inactivate granzyme M, an enzyme that kills tumor cells. This protein, along with serpin B3, can be processed into smaller fragments that aggregate to form an autoantigen in psoriasis, probably by causing chronic inflammation.

## Verified picture



Western blot analysis with SERPINB4 antibody  
diluted at 1:2000; Lane: U87