

Anti-BRS3 Polyclonal Antibody

Cat: K110319P

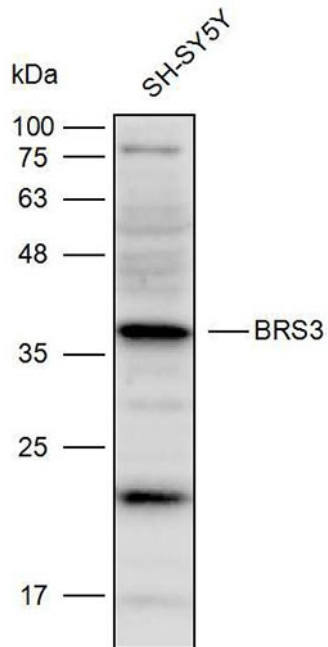
Summary:

【Product name】 : Anti-BRS3 antibody	【Source】 : Rabbit
【Isotype】 : IgG	【Species reactivity】 : Human Mouse Rat
【Swiss Prot】 : P32247	【Gene ID】 : 680
【Calculated】 : MW:44kDa	【Observed】 : MW:38kDa
【Purification】 : Affinity purification	
【Tested applications】 : WB	
【Recommended dilution】 : WB 1:1000-3000.	
【WB Positive sample】 :SH-SY5Y	
【Subcellular location】 : Cell membrane	
【Immunogen】 : A synthetic peptide of BRS3	
【Storage】 : Shipped at 4°C. Upon delivery aliquot and store at -20°C	

Background:

Role in sperm cell division, maturation, or function. This receptor mediates its action by association with G proteins that activate a phosphatidylinositol-calcium second messenger system.

Verified picture



Western blot analysis with BRS3 antibody diluted at
1:2000; Lane: SH-SY5Y