

## Anti-OPN3 Polyclonal Antibody

Cat: K110320P

### Summary:

---

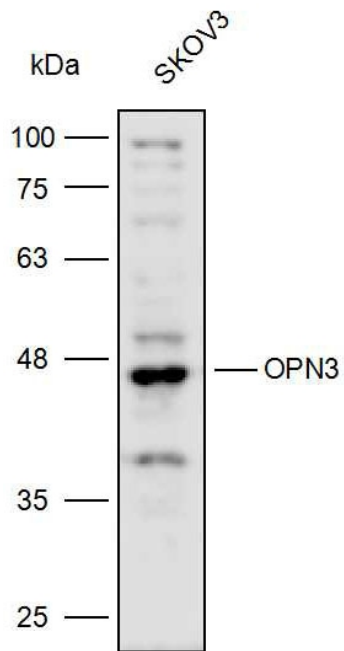
<b>【Product name】</b> : Anti-OPN3 antibody	<b>【Source】</b> : Rabbit
<b>【Isotype】</b> : IgG	<b>【Species reactivity】</b> : Human Mouse
<b>【Swiss Prot】</b> : Q9H1Y3	<b>【Gene ID】</b> : 23596
<b>【Calculated】</b> : MW:36/44kDa	<b>【Observed】</b> : MW:46kDa
<b>【Purification】</b> : Affinity purification	
<b>【Tested applications】</b> : WB	
<b>【Recommended dilution】</b> : WB 1:1000-3000.	
<b>【WB Positive sample】</b> :SKOV3	
<b>【Subcellular location】</b> : Cytoplasm	
<b>【Immunogen】</b> : A synthetic peptide of OPN3	
<b>【Storage】</b> : Shipped at 4°C. Upon delivery aliquot and store at -20°C	

### Background:

---

Opsins are members of the guanine nucleotide-binding protein (G protein)-coupled receptor superfamily. In addition to the visual opsins; mammals possess several photoreceptive non-visual opsins that are expressed in extraocular tissues. This gene; opsin 3; is strongly expressed in brain and testis and weakly expressed in liver; placenta; heart; lung; skeletal muscle; kidney; and pancreas. The gene may also be expressed in the retina. The protein has the canonical features of a photoreceptive opsin protein.

## Verified picture



Western blot analysis with OPN3 antibody diluted at  
1:2000; Lane: SKOV3