

Anti-SLC16A3 Polyclonal Antibody

Cat: K110327P

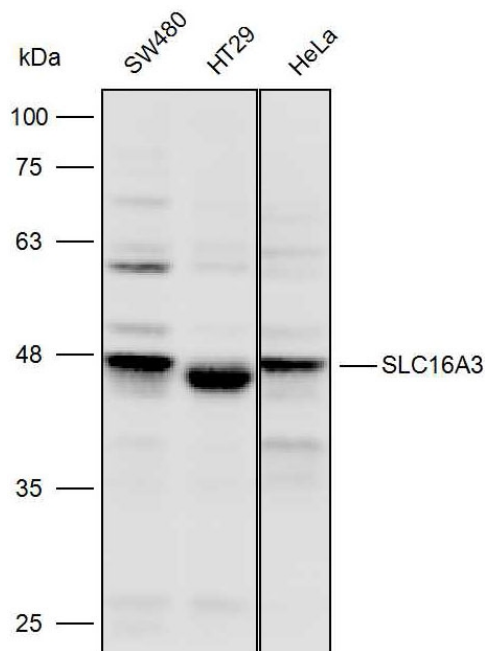
Summary:

【Product name】 : Anti-SLC16A3antibody	【Source】 : Rabbit
【Isotype】 : IgG	【Species reactivity】 : Human Mouse Rat
【Swiss Prot】 : O15427	【Gene ID】 : 9123
【Calculated】 : MW:49kDa	【Observed】 : MW:47/48kDa
【Purification】 : Affinity purification	
【Tested applications】 : WB IHC	
【Recommended dilution】 : WB 1:2000-5000. IHC 1:50-200.	
【WB Positive sample】 : SW480,HT29,HeLa	
【IHC Positive sample】 : Human liver cancer	
【Subcellular location】 : Cell membrane Cytoplasm	
【Immunogen】 : A synthetic peptide of SLC16A3	
【Storage】 : Shipped at 4°C. Upon delivery aliquot and store at -20°C	

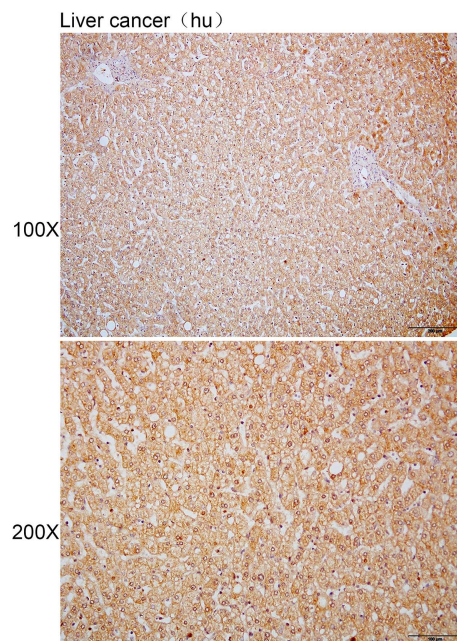
Background:

Proton-linked monocarboxylate transporter. Catalyzes the rapid transport across the plasma membrane of many monocarboxylates such as lactate; pyruvate; branched-chain oxo acids derived from leucine; valine and isoleucine; and the ketone bodies acetoacetate; beta-hydroxybutyrate and acetate.

Verified picture



Western blot analysis with SLC16A3 antibody diluted at 1:3000; Lane: SW480, HT29, HeLa



Immunohistochemistry of paraffin-embedded Human liver cancer using SLC16A3 antibody diluted at 1:80