

Anti-SLC2A4 Polyclonal Antibody

Cat: K110331P

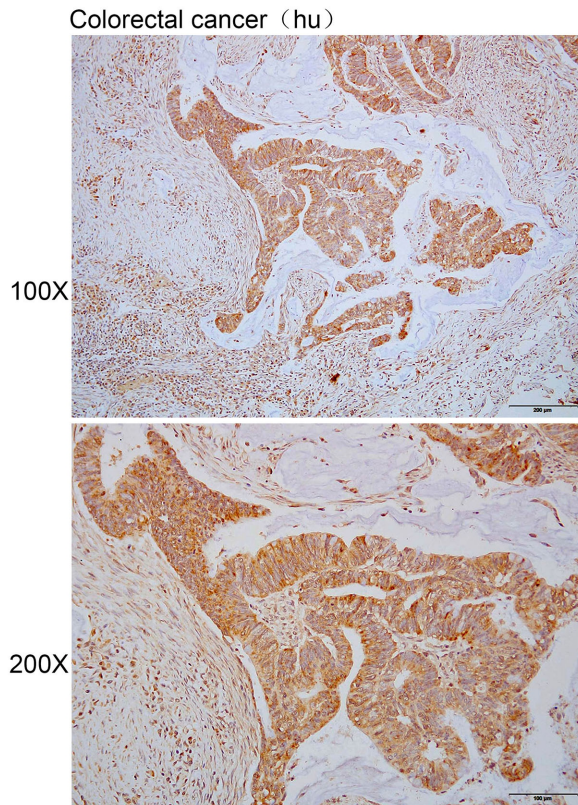
Summary:

【Product name】 : Anti-SLC2A4 antibody	【Source】 : Rabbit
【Isotype】 : IgG	【Species reactivity】 : Human Mouse Rat
【Swiss Prot】 : P14672	【Gene ID】 : 6517
【Calculated】 : MW:44/55kDa	
【Purification】 : Affinity purification	
【Tested applications】 : IHC	
【Recommended dilution】 : IHC 1:25-100.	
【IHC Positive sample】 : Human colorectal cancer	
【Subcellular location】 : Cell membrane Secreted	
【Immunogen】 : A synthetic peptide of SLC2A4	
【Storage】 : Shipped at 4°C. Upon delivery aliquot and store at -20°C	

Background:

Insulin-regulated facilitative glucose transporter, which plays a key role in removal of glucose from circulation. Response to insulin is regulated by its intracellular localization: in the absence of insulin, it is efficiently retained intracellularly within storage compartments in muscle and fat cells. Upon insulin stimulation, translocates from these compartments to the cell surface where it transports glucose from the extracellular milieu into the cell.

Verified picture



Immunohistochemistry of paraffin-embedded
Human colorectal cancer using SLC2A4 antibody
diluted at 1:40