

## Anti-OGDH Polyclonal Antibody

Cat: K110364P

### Summary:

---

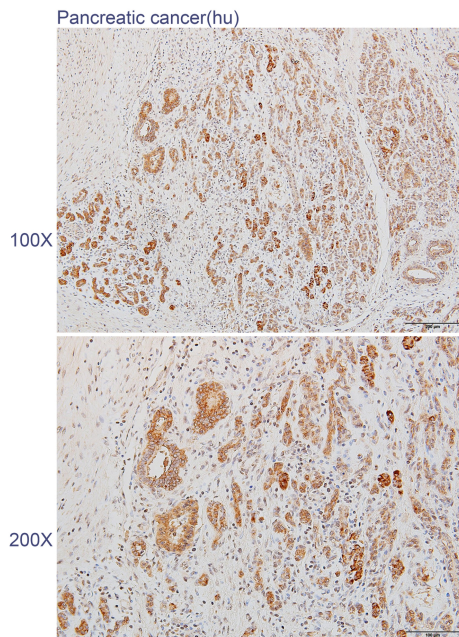
- 【Product name】** : Anti-OGDH antibody                      **【Source】** : Rabbit
- 【Isotype】** : IgG    **【Species reactivity】** : Human Mouse
- 【Swiss Prot】** : Q02218    **【Gene ID】** : 4967
- 【Calculated】** : MW:48/116kDa
- 【Purification】** : Octanoic acid-ammonium sulfate precipitation
- 【Tested applications】** : IHC
- 【Recommended dilution】** : IHC 1:100-300.
- 【IHC Positive sample】** : Human pancreatic cancer
- 【Subcellular location】** : Cytoplasm Nucleus
- 【Immunogen】** : Recombinant protein of human OGDH
- 【Storage】** : Shipped at 4°C. Upon delivery aliquot and store at -20°C

### Background:

---

2-oxoglutarate dehydrogenase (E1) component of the 2-oxoglutarate dehydrogenase complex, which mediates the decarboxylation of alpha-ketoglutarate. The 2-oxoglutarate dehydrogenase complex catalyzes the overall conversion of 2-oxoglutarate to succinyl-CoA and CO<sub>2</sub>. The 2-oxoglutarate dehydrogenase complex is mainly active in the mitochondrion. A fraction of the 2-oxoglutarate dehydrogenase complex also localizes in the nucleus and is required for lysine succinylation of histones: associates with KAT2A on chromatin and provides succinyl-CoA to histone succinyltransferase KAT2A.

## Verified picture



Immunohistochemistry of paraffin-embedded  
Human pancreatic cancer using OGDH antibody  
diluted at 1:200