

Anti-CCDC106 Polyclonal Antibody

Cat: K110368P

Summary:

【Product name】 : Anti-CCDC106 antibody

【Source】 : Rabbit

【Isotype】 : IgG

【Species reactivity】 : Human Mouse Rat

【Swiss Prot】 : Q9BWC9

【Gene ID】 : 29903

【Calculated】 : MW:32kDa

【Purification】 : Affinity purification

【Tested applications】 : IHC

【Recommended dilution】 : IHC 1:50-200.

【IHC Positive sample】 : Human breast cancer

【Subcellular location】 : Nucleus Cytoplasm

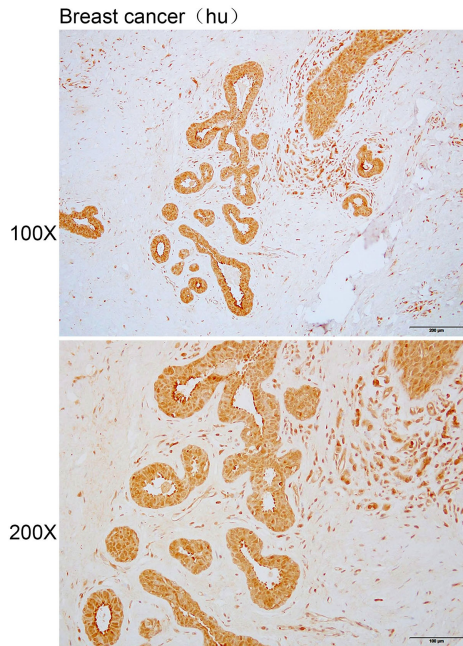
【Immunogen】 : Recombinant protein of human CCDC106

【Storage】 : Shipped at 4°C. Upon delivery aliquot and store at -20°C

Background:

Promotes the degradation of p53/TP53 protein and inhibits its transactivity.

Verified picture



Immunohistochemistry of paraffin-embedded
Human breast cancer using CCDC106 antibody
diluted at 1:100