

Anti-PLIN2 Polyclonal Antibody

Cat: K110370P

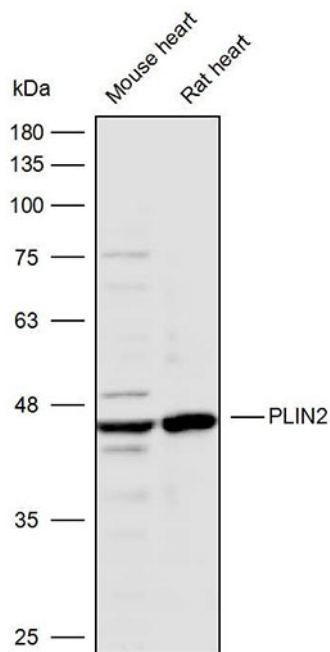
Summary:

【Product name】 : Anti-PLIN2 antibody	【Source】 : Rabbit
【Isotype】 : IgG	【Species reactivity】 : Human Mouse Rat
【Swiss Prot】 : Q99541	【Gene ID】 : 123
【Calculated】 : MW:33/64/65kDa	【Observed】 : MW:46kDa
【Purification】 : Affinity purification	
【Tested applications】 : WB IHC	
【Recommended dilution】 : WB 1:2000-5000. IHC 1:50-200.	
【WB Positive sample】 : Mouse heart,Rat heart	
【IHC Positive sample】 : Human colorectal cancer	
【Subcellular location】 : Cell membrane Cytoplasm Nucleus	
【Immunogen】 : Recombinant protein of human PLIN2	
【Storage】 : Shipped at 4°C. Upon delivery aliquot and store at -20°C	

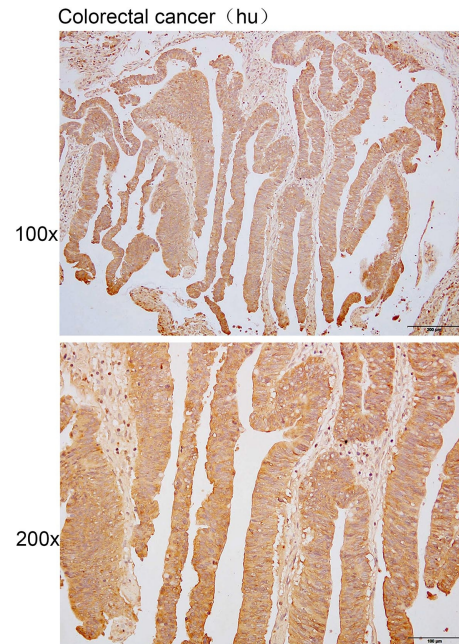
Background:

May be involved in development and maintenance of adipose tissue.

Verified picture



Western blot analysis with PLIN2 antibody diluted at 1:3000; Lane: Mouse heart, Rat heart



Immunohistochemistry of paraffin-embedded Human colorectal cancer using PLIN2 antibody diluted at 1:100