

Anti-IFRD1 Polyclonal Antibody

Cat: K110372P

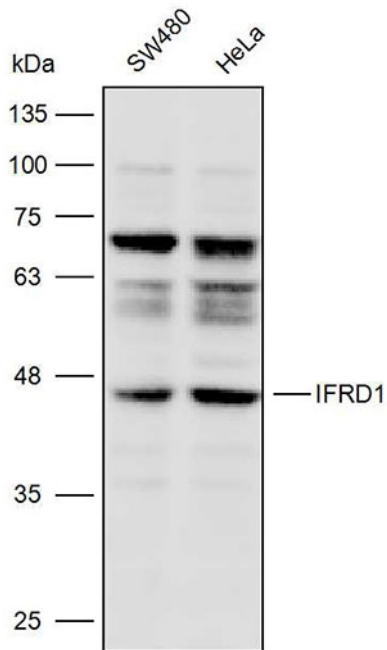
Summary:

【Product name】 : Anti-IFRD1 antibody	【Source】 : Rabbit
【Isotype】 : IgG	【Species reactivity】 : Human Mouse Rat
【Swiss Prot】 : O00458	【Gene ID】 : 3475
【Calculated】 : MW:33/64/65kDa	【Observed】 : MW:46kDa
【Purification】 : Octanoic acid-ammonium sulfate precipitation	
【Tested applications】 : WB IHC	
【Recommended dilution】 : WB 1:1000-3000. IHC 1:100-300.	
【WB Positive sample】 : SW480,HeLa	
【IHC Positive sample】 : Human breast cancer	
【Subcellular location】 : Cytoplasm Nucleus	
【Immunogen】 : Recombinant protein of human IFRD1	
【Storage】 : Shipped at 4°C. Upon delivery aliquot and store at -20°C	

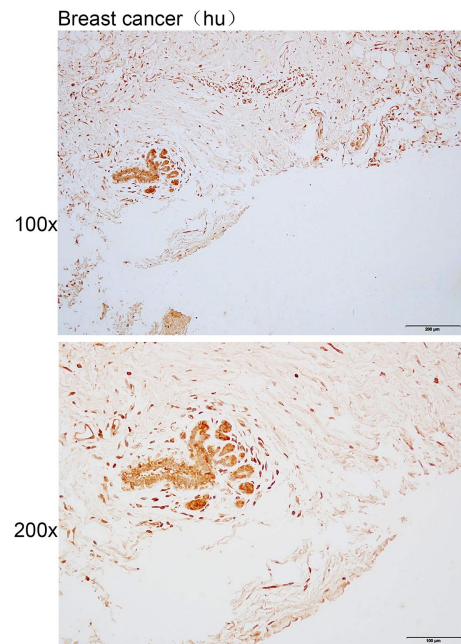
Background:

Could play a role in regulating gene activity in the proliferative and/or differentiative pathways induced by NGF. May be an autocrine factor that attenuates or amplifies the initial ligand-induced signal (By similarity).

Verified picture



Western blot analysis with IFRD1 antibody diluted at 1:2000; Lane: SW480, HeLa



Immunohistochemistry of paraffin-embedded Human breast cancer using IFRD1 antibody diluted at 1:200