

Anti-RUFY1 Polyclonal Antibody

Cat: K110382P

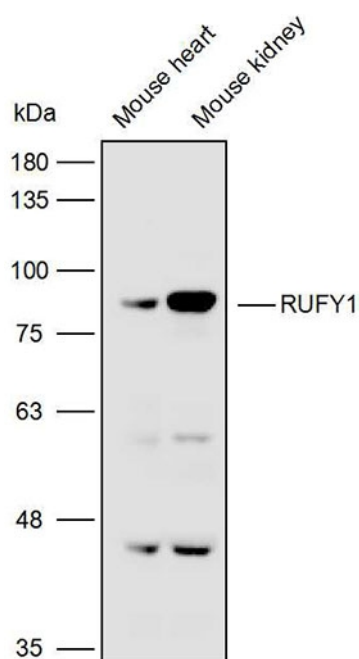
Summary:

【Product name】 : Anti-RUFY1 antibody	【Source】 : Rabbit
【Isotype】 : IgG	【Species reactivity】 : Human Mouse Rat
【Swiss Prot】 : Q96T51	【Gene ID】 : 80230
【Calculated】 : MW:33/64/65kDa	【Observed】 : MW:80kDa
【Purification】 : Affinity purification	
【Tested applications】 : WB IHC	
【Recommended dilution】 : WB 1:2000-5000. IHC 1:50-200.	
【WB Positive sample】 : Mouse heart,Mouse kidney	
【IHC Positive sample】 : Human colorectal cancer	
【Subcellular location】 : Cytoplasm Nucleus	
【Immunogen】 : Recombinant protein of human RUFY1	
【Storage】 : Shipped at 4°C. Upon delivery aliquot and store at -20°C	

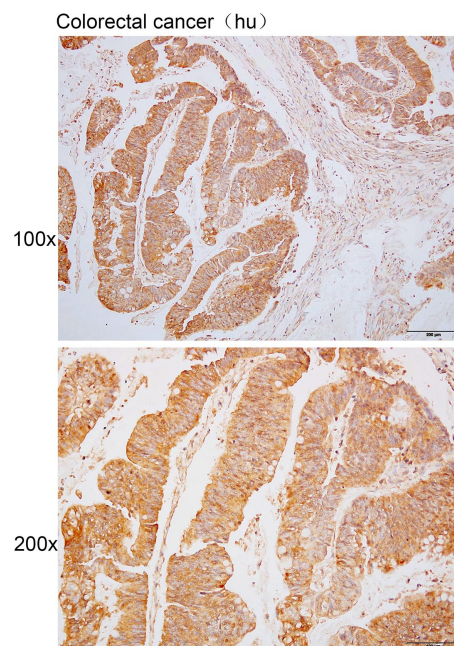
Background:

Binds phospholipid vesicles containing phosphatidylinositol 3-phosphate and participates in early endosomal trafficking.

Verified picture



Western blot analysis with RUFY1 antibody diluted at 1:3000; Lane: Mouse heart, Mouse kidney



Immunohistochemistry of paraffin-embedded Human colorectal cancer using RUFY1 antibody diluted at 1:100