

## Anti-RIMBP3 Polyclonal Antibody

Cat: K110390P

### Summary:

---

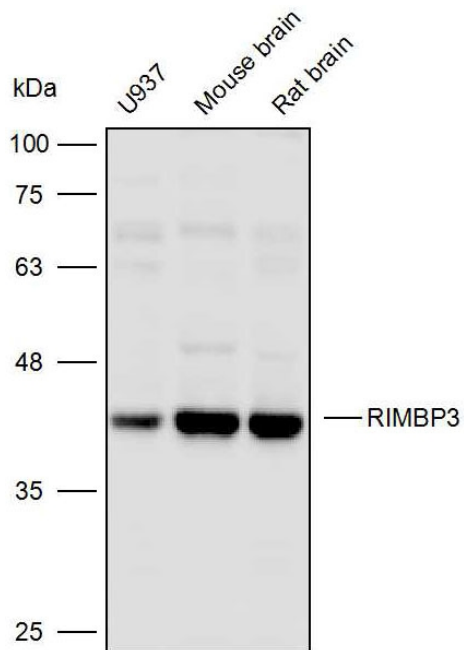
<b>【Product name】</b> : Anti-RIMBP3 antibody	<b>【Source】</b> : Rabbit
<b>【Isotype】</b> : IgG	<b>【Species reactivity】</b> : Human Mouse Rat
<b>【Swiss Prot】</b> : Q9UFD9	<b>【Gene ID】</b> : 85376
<b>【Calculated】</b> : MW:33/64/65kDa	<b>【Observed】</b> : MW:42kDa
<b>【Purification】</b> : Octanoic acid-ammonium sulfate precipitation	
<b>【Tested applications】</b> : WB IHC	
<b>【Recommended dilution】</b> : WB 1:2000-5000. IHC 1:50-200.	
<b>【WB Positive sample】</b> : U937, Mouse brain, Rat brain	
<b>【IHC Positive sample】</b> : Human thyroid cancer	
<b>【Subcellular location】</b> : Cytoplasm Nucleus	
<b>【Immunogen】</b> : Recombinant protein of human RIMBP3	
<b>【Storage】</b> : Shipped at 4°C. Upon delivery aliquot and store at -20°C	

### Background:

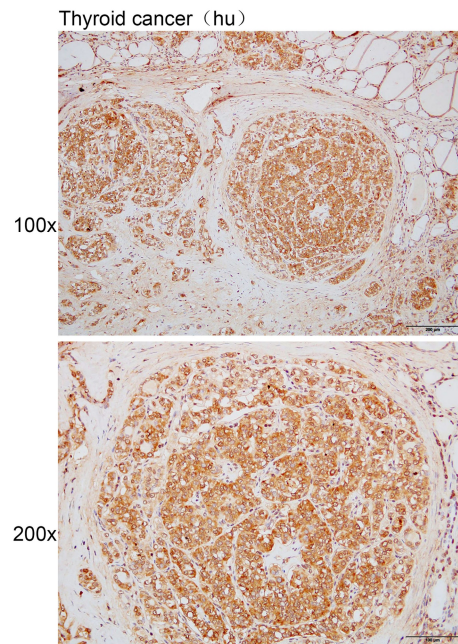
---

Probable component of the manchette, a microtubule-based structure which plays a key role in sperm head morphogenesis during late stages of sperm development.

## Verified picture



Western blot analysis with RIMBP3 antibody diluted at 1:3000; Lane: U937, Mouse brain, Rat brain



Immunohistochemistry of paraffin-embedded using Human thyroid cancer using RIMBP3 antibody diluted at 1:100