

## Anti-CCDC14 Polyclonal Antibody

Cat: K110392P

### Summary:

---

**【Product name】** : Anti-CCDC14 antibody

**【Source】** : Rabbit

**【Isotype】** : IgG

**【Species reactivity】** : Human Mouse Rat

**【Swiss Prot】** : Q49A88

**【Gene ID】** : 64770

**【Calculated】** : MW:51/88/101/106kDa

**【Purification】** : Affinity purification

**【Tested applications】** : IHC

**【Recommended dilution】** : IHC 1:50-200.

**【IHC Positive sample】** : Human pancreatic cancer

**【Subcellular location】** : Cytoplasm

**【Immunogen】** : Recombinant protein of human CCDC14

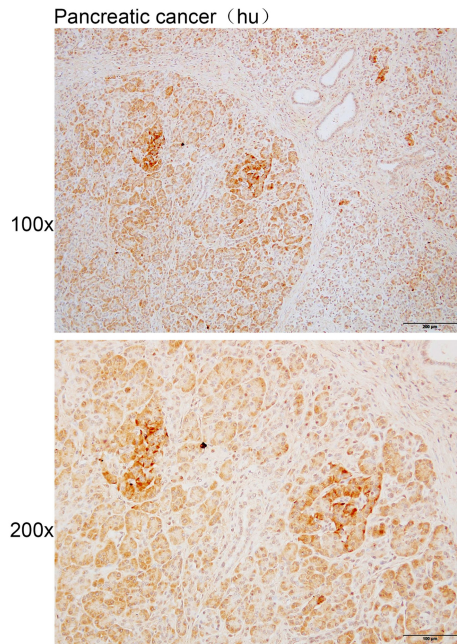
**【Storage】** : Shipped at 4°C. Upon delivery aliquot and store at -20°C

### Background:

---

Negatively regulates centriole duplication. Negatively regulates CEP63 and CDK2 centrosomal localization.

## Verified picture



Immunohistochemistry of paraffin-embedded  
Human pancreatic cancer using CCDC14 antibody  
diluted at 1:100