

## Anti-NAA20 Polyclonal Antibody

Cat: K110399P

### Summary:

---

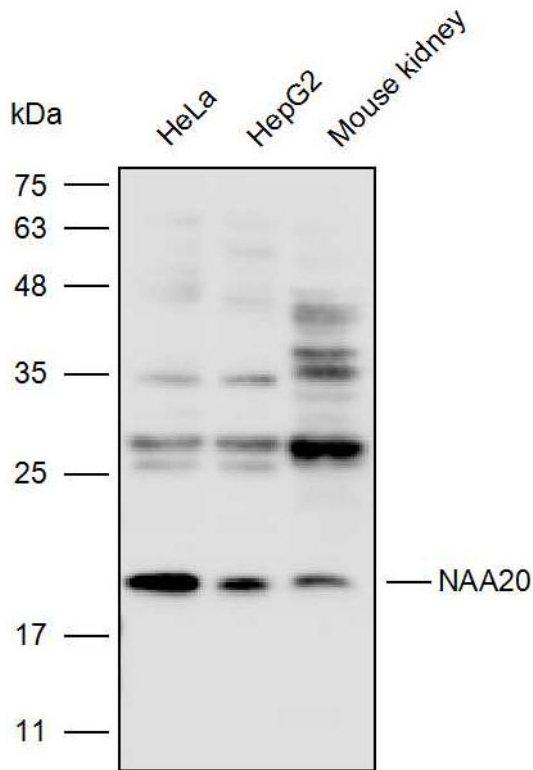
- 【Product name】** : Anti-NAA20 antibody                      **【Source】** : Rabbit
- 【Isotype】** : IgG    **【Species reactivity】** : Human Mouse
- 【Swiss Prot】** : P61599    **【Gene ID】** : 51126
- 【Calculated】** : MW:13/20kDa    **【Observed】** : MW:18kDa
- 【Purification】** : Octanoic acid-ammonium sulfate precipitation
- 【Tested applications】** : WB
- 【Recommended dilution】** : WB 1:1000-3000.
- 【WB Positive sample】** : HeLa,HepG2,Mouse kidney
- 【Subcellular location】** : Cytoplasm Nucleus
- 【Immunogen】** : Recombinant protein of human NAA20
- 【Storage】** : Shipped at 4°C. Upon delivery aliquot and store at -20°C

### Background:

---

Catalytic subunit of the NatB complex which catalyzes acetylation of the N-terminal methionine residues of peptides beginning with Met-Asp, Met-Glu, Met-Asn and Met-Gln. Proteins with cell cycle functions are overrepresented in the pool of NatB substrates. Required for maintaining the structure and function of actomyosin fibers and for proper cellular migration.

## Verified picture



Western blot analysis with NAA20 antibody diluted at 1:2000; Lane: HeLa, HepG2, Mouse kidney