

## Anti-DCTN1 Polyclonal Antibody

Cat: K110404P

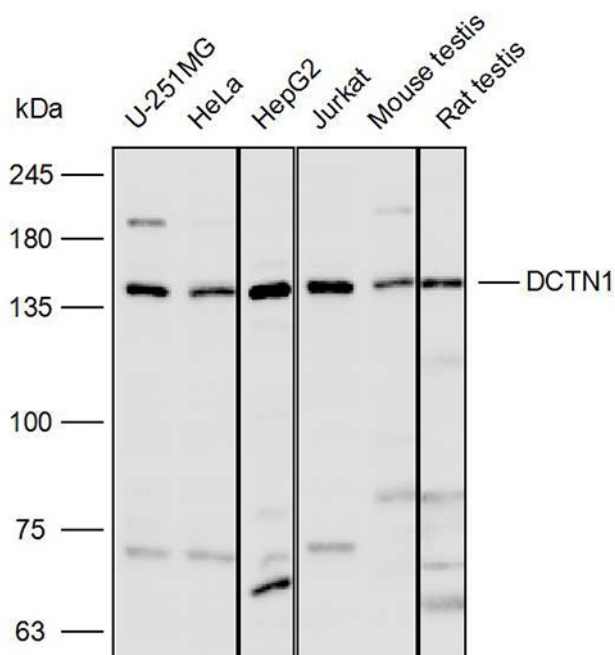
### Summary:

【Product name】 : Anti-DCTN1 antibody	【Source】 : Rabbit
【Isotype】 : IgG	【Species reactivity】 : Human Mouse Rat
【Swiss Prot】 : Q14203	【Gene ID】 : 1639
【Calculated】 : MW:33/64/65kDa	【Observed】 : MW:142kDa
【Purification】 : Affinity purification	
【Tested applications】 : WB IHC	
【Recommended dilution】 : WB 1:1000-3000. IHC 1:50-200.	
【WB Positive sample】 : U-251MG,HeLa,HepG2,Jurkat,Mouse testis,Rat testis	
【IHC Positive sample】 : Human pancreatic cancer	
【Subcellular location】 : Cytoplasm Nucleus	
【Immunogen】 : Recombinant protein of human DCTN1	
【Storage】 : Shipped at 4°C. Upon delivery aliquot and store at -20°C	

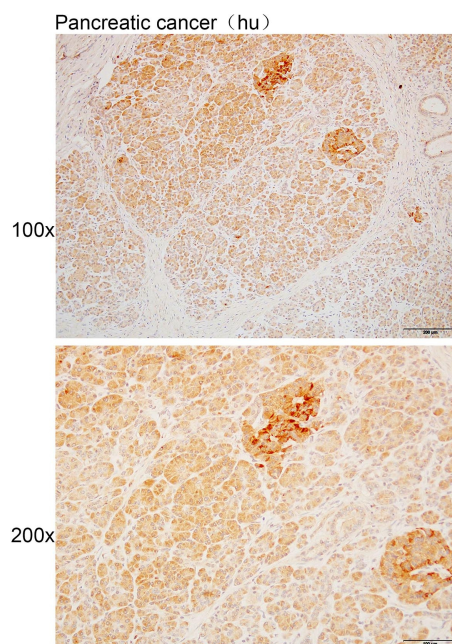
### Background:

Plays a key role in dynein-mediated retrograde transport of vesicles and organelles along microtubules by recruiting and tethering dynein to microtubules. Binds to both dynein and microtubules providing a link between specific cargos, microtubules and dynein. Essential for targeting dynein to microtubule plus ends, recruiting dynein to membranous cargos and enhancing dynein processivity (the ability to move along a microtubule for a long distance without falling off the track). Can also act as a brake to slow the dynein motor during motility along the microtubule. Can regulate microtubule stability by promoting microtubule formation, nucleation and polymerization and by inhibiting microtubule catastrophe in neurons. Inhibits microtubule catastrophe by binding both to microtubules and to tubulin, leading to enhanced microtubule stability along the axon. Plays a role in metaphase spindle orientation. Plays a role in centriole cohesion and subdistal appendage organization and function. Its recruitment to the centriole in a KIF3A-dependent manner is essential for the maintenance of centriole cohesion and the formation of subdistal appendage. Also required for microtubule anchoring at the mother centriole. Plays a role in primary cilia formation.

## Verified picture



Western blot analysis with DCTN1 antibody diluted at 1:2000; Lane: U-251MG, HeLa, HepG2, Jurkat, Mouse testis, Rat testis



Immunohistochemistry of paraffin-embedded Human pancreatic cancer using DCTN1 antibody diluted at 1:100