

Anti-PDP2 Polyclonal Antibody

Cat: K110406P

Summary:

【Product name】 : Anti-PDP2 antibody

【Source】 : Rabbit

【Isotype】 : IgG

【Species reactivity】 : Human Mouse Rat

【Swiss Prot】 : Q9P2J9

【Gene ID】 : 57546

【Calculated】 : MW:60kDa

【Purification】 : Affinity purification

【Tested applications】 : IHC

【Recommended dilution】 : IHC 1:50-200.

【IHC Positive sample】 : Human colorectal cancer

【Subcellular location】 : Cytoplasm

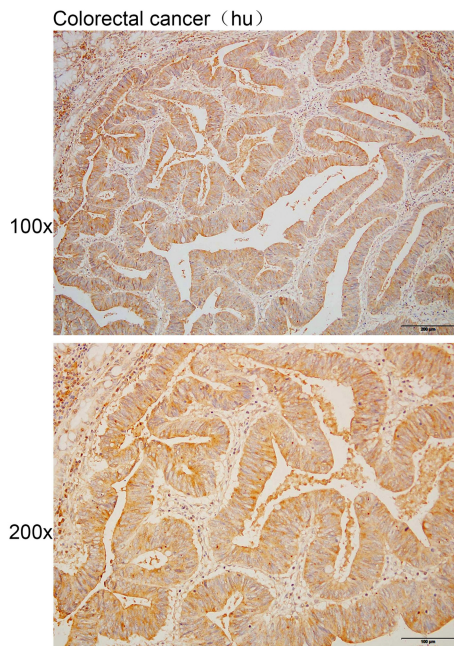
【Immunogen】 : Recombinant protein of human PDP2

【Storage】 : Shipped at 4°C. Upon delivery aliquot and store at -20°C

Background:

Catalyzes the dephosphorylation and concomitant reactivation of the alpha subunit of the E1 component of the pyruvate dehydrogenase complex.

Verified picture



Immunohistochemistry of paraffin-embedded
Human colorectal cancer using PDP2 antibody
diluted at 1:100