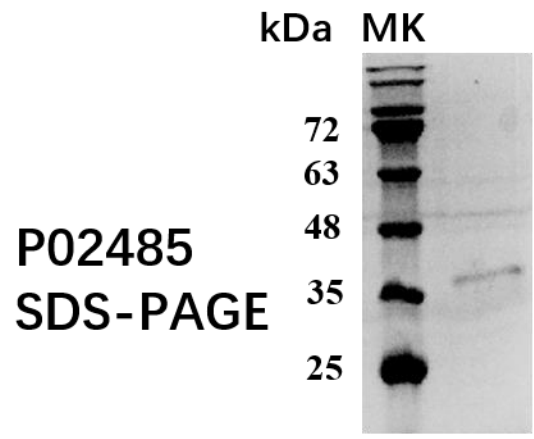


## Recombinant human CPPED1 protein

Catalog#:P02485    Derived from E.coli

<b>DESCRIPTION</b>	Recombinant Human CPPED1 protein is produced by our E.coli expression system with His tag. Uniprot: Q9BRF8 Gene ID: 55313
<b>Size</b>	36 kDa
<b>FORMULATION</b>	Lyophilized from a 0.2 µm filtered solution of Tris-HCl, PH 8.0.
<b>SHIPPING</b>	The product is shipped at -20°C temperature. Upon receipt, store it immediately at the temperature listed below.
<b>STORAGE</b>	Reconstituted protein solution can be stored at 4-7°C for 2-3 months, stable at < -20°C for 1-2 years.
<b>RECONSTITUTION</b>	Reconstituted protein solution can be diluted with distilled PBS. Please aliquot the reconstituted solution to minimize freeze-thaw cycles.
<b>QUALITY CONTROL</b>	(Liquid)Concentration: 1 mg/mL as determined by BCA. Purity: 85% as determined by reducing SDS-PAGE.
<b>AMINOACID</b>	Recombinant protein is produced by our E.coli expression system and the target gene encoding 1-314aa is expressed with a 6*His tag at the N-terminus.
<b>BACKGROUND</b>	The protein encoded by this intronless gene belongs to the highly variable methyltransferase superfamily. This gene is the inferred homolog of the <i>Saccharomyces cerevisiae</i> carboxymethyltransferase gene PPM2 that is essential for the synthesis of the hypermodified guanosine Wybutosine (yW).



Recombinant human CPPED1 protein