

Anti-IL2RA Polyclonal Antibody

Cat: K107601P

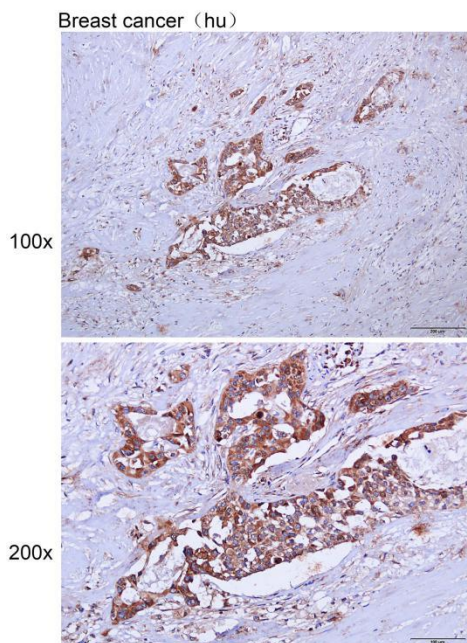
Summary:

【Product name】 : Anti-IL2RA antibody	【Source】 : Rabbit
【Isotype】 : IgG	【Species reactivity】 : Human
【Swiss Prot】 : P01589	【Gene ID】 : 3559
【Calculated】 : MW:31kDa	
【Purification】 : Affinity purification	
【Tested applications】 : IHC	
【Recommended dilution】 : IHC 1:50-200.	
【IHC Positive sample】 : Human breast cancer	
【Subcellular location】 : Cytoplasm	
【Immunogen】 : A synthetic peptide of human IL2RA	
【Storage】 : Shipped at 4°C. Upon delivery aliquot and store at -20°C	

Background:

The interleukin 2 (IL2) receptor alpha (IL2RA) and beta (IL2RB) chains, together with the common gamma chain (IL2RG), constitute the high-affinity IL2 receptor. Homodimeric alpha chains (IL2RA) result in low-affinity receptor, while homodimeric beta (IL2RB) chains produce a medium-affinity receptor. Normally an integral-membrane protein, soluble IL2RA has been isolated and determined to result from extracellular proteolysis. Alternately-spliced IL2RA mRNAs have been isolated, but the significance of each is presently unknown. Mutations in this gene are associated with interleukin 2 receptor alpha deficiency.

Verified picture



Immunohistochemistry of paraffin-embedded
Human breast cancer with ERAB antibody
diluted at 1:100