

## Anti-NAXE Polyclonal Antibody

Cat: K107603P

### Summary:

---

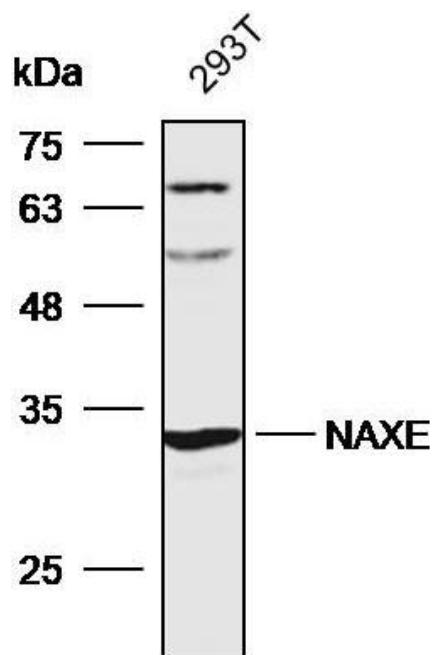
<b>【Product name】</b> : Anti-NAXE antibody	<b>【Source】</b> : Rabbit
<b>【Isotype】</b> : IgG	<b>【Species reactivity】</b> : Human Mouse Rat
<b>【Swiss Prot】</b> : Q8NCW5	<b>【Gene ID】</b> : 128240
<b>【Calculated】</b> : MW:120/31kDa	<b>【Observed】</b> : MW:28kDa
<b>【Purification】</b> : Affinity purification	
<b>【Tested applications】</b> : WB IHC	
<b>【Recommended dilution】</b> : WB 1:1000-1:3000. IHC 1:50-200.	
<b>【WB Positive sample】</b> :293T	
<b>【IHC Positive sample】</b> : Human stomach cancer	
<b>【Subcellular location】</b> : Cytoplasm	
<b>【Immunogen】</b> : A synthetic peptide of human NAXE	
<b>【Storage】</b> : Shipped at 4°C. Upon delivery aliquot and store at -20°C	

### Background:

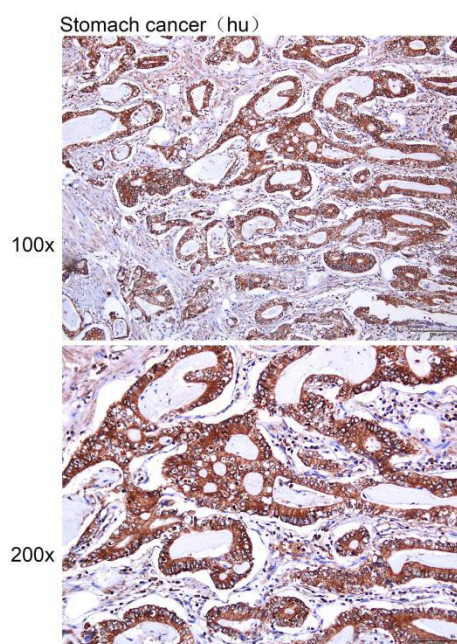
---

The product of this gene interacts with apolipoprotein A-I (apoA-I), the major apolipoprotein of high-density lipoproteins (HDLs). It is secreted into some bodily fluids, and its synthesis and secretion are stimulated in vitro by incubating cells with apoA-I. The human genome contains related pseudogenes.

## Verified picture



Western blot analysis with NAXE antibody diluted at 1:2000; Lane:293T



Immunohistochemistry of paraffin-embedded Human stomach cancer with NAXE antibody diluted at 1:100