

## Anti-EFNA3 Polyclonal Antibody

Cat: K107608P

### Summary:

---

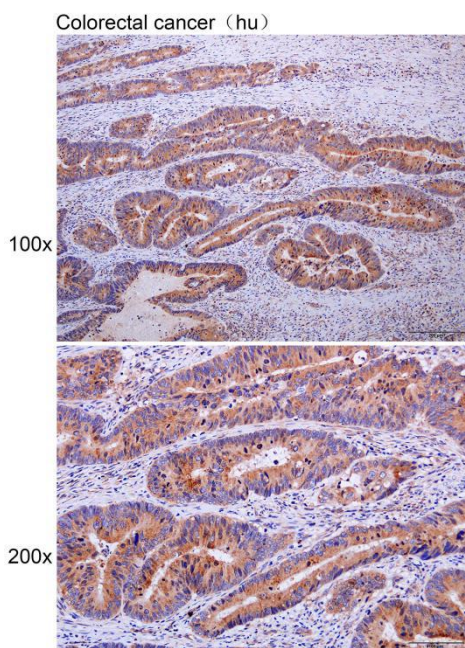
<b>【Product name】</b> : Anti-EFNA3 antibody	<b>【Source】</b> : Rabbit
<b>【Isotype】</b> : IgG	<b>【Species reactivity】</b> : Human Mouse Rat
<b>【Swiss Prot】</b> : P52797	<b>【Gene ID】</b> : 1944
<b>【Calculated】</b> : MW:23/26kDa	
<b>【Purification】</b> : Affinity purification	
<b>【Tested applications】</b> : IHC	
<b>【Recommended dilution】</b> : IHC 1:50-200.	
<b>【IHC Positive sample】</b> : Human colorectal cancer	
<b>【Subcellular location】</b> : Cytoplasm	
<b>【Immunogen】</b> : A synthetic peptide of human EFNA3	
<b>【Storage】</b> : Shipped at 4°C. Upon delivery aliquot and store at -20°C	

### Background:

---

Cell surface GPI-bound ligand for Eph receptors, a family of receptor tyrosine kinases which are crucial for migration, repulsion and adhesion during neuronal, vascular and epithelial development. Binds promiscuously Eph receptors residing on adjacent cells, leading to contact-dependent bidirectional signaling into neighboring cells. The signaling pathway downstream of the receptor is referred to as forward signaling while the signaling pathway downstream of the ephrin ligand is referred to as reverse signaling (By similarity).

## Verified picture



Immunohistochemistry of paraffin-embedded  
Human colorectal cancer with EFNA3  
antibody diluted at 1:100