

Anti-HCCS Polyclonal Antibody

Cat: K107684P

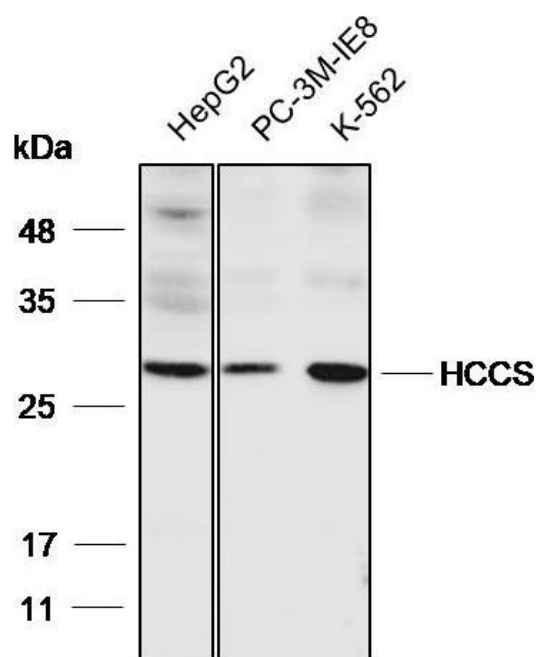
Summary:

【Product name】 : Anti-HCCS antibody	【Source】 : Rabbit
【Isotype】 : IgG	【Species reactivity】 : Human Mouse
【Swiss Prot】 : P53701	【Gene ID】 : 3052
【Calculated】 : MW:30kDa	【Observed】 : MW:23kDa
【Purification】 : Affinity purification	
【Tested applications】 : WB IHC	
【Recommended dilution】 : WB 1:5000-1:8000. IHC 1:25-100.	
【WB Positive sample】 : HepG2,PC-3M-IE8,K-562	
【IHC Positive sample】 : Human pancreatic cancer	
【Subcellular location】 : Cytoplasm	
【Immunogen】 : A synthetic peptide of human HCCS	
【Storage】 : Shipped at 4°C. Upon delivery aliquot and store at -20°C	

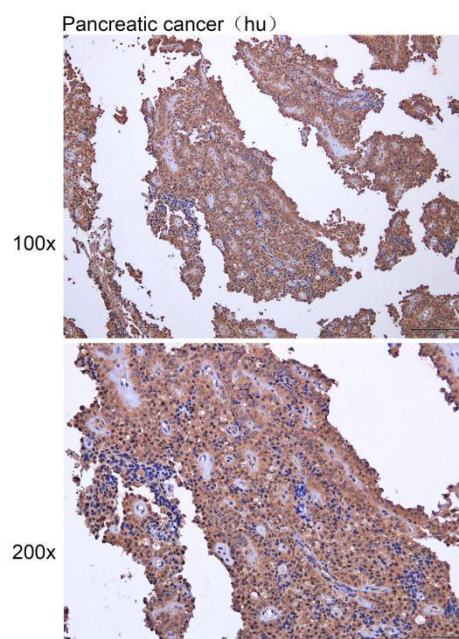
Background:

The protein encoded by this gene is an enzyme that covalently links a heme group to the apoprotein of cytochrome c. Defects in this gene are a cause of microphthalmia syndromic type 7 (MCOPS7). Three transcript variants encoding the same protein have been found for this gene.

Verified picture



Western blot analysis with HCCS antibody diluted at 1:6000; Lane: HepG2, PC-3M-IE8, K-562



Immunohistochemistry of paraffin-embedded Human pancreatic cancer with HCCS antibody diluted at 1:40