

## Anti-Epac1 Polyclonal Antibody

Cat: K107963P

### Summary:

---

**【Product name】** : Anti-Epac1 antibody

**【Source】** : Rabbit

**【Isotype】** : IgG

**【Species reactivity】** : Human Mouse Rat

**【Swiss Prot】** : O95398

**【Gene ID】** : 10411

**【Calculated】** : MW:66/99/104kDa

**【Purification】** : Affinity purification

**【Tested applications】** : IHC

**【Recommended dilution】** : IHC 1:50-200.

**【IHC Positive sample】** : Human liver cancer

**【Subcellular location】** : Cytoplasm Cell membrane

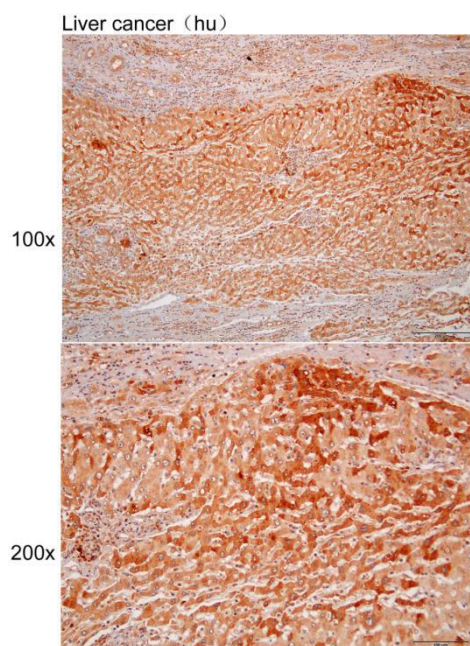
**【Immunogen】** : A synthetic peptide of human Epac1

**【Storage】** : Shipped at 4°C. Upon delivery aliquot and store at -20°C

### Background:

---

## Verified picture



Immunohistochemistry of paraffin-embedded  
Human liver cancer with Epac1 antibody  
diluted at 1:100