

## Anti-LYPLAL1 Polyclonal Antibody

Cat: K108112P

### Summary:

---

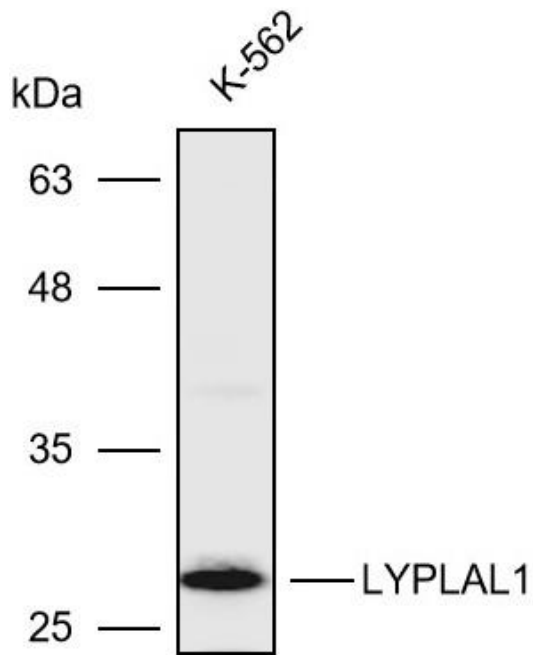
<b>【Product name】</b> : Anti-LYPLAL1 antibody	<b>【Source】</b> : Rabbit
<b>【Isotype】</b> : IgG	<b>【Species reactivity】</b> : Human Mouse Rat
<b>【Swiss Prot】</b> : Q5VWZ2	<b>【Gene ID】</b> : 127018
<b>【Calculated】</b> : MW:24/26kDa	<b>【Observed】</b> : MW:28kDa
<b>【Purification】</b> : Affinity purification	
<b>【Tested applications】</b> : WB IHC	
<b>【Recommended dilution】</b> : WB 1:1000-3000. IHC1:100-300.	
<b>【WB Positive sample】</b> : K-562	
<b>【IHC Positive sample】</b> : Human colorectal cancer	
<b>【Subcellular location】</b> : Cytoplasm	
<b>【Immunogen】</b> : Recombinant protein of human LYPLAL1	
<b>【Storage】</b> : Shipped at 4°C. Upon delivery aliquot and store at -20°C	

### Background:

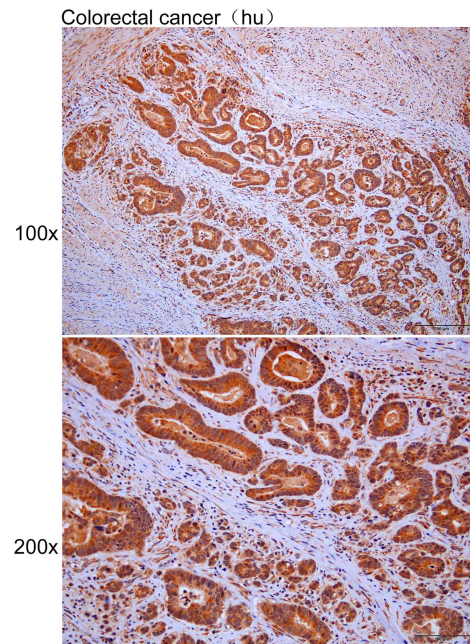
---

Has depalmitoylating activity toward KCNMA1. Does not exhibit phospholipase nor triacylglycerol lipase activity, able to hydrolyze only short chain substrates due to its shallow active site.

## Verified picture



Western blot analysis with LYPLAL1 antibody diluted at 1:2000; Lane: K-562



Immunohistochemistry of paraffin-embedded Human colorectal cancer with LYPLAL1 antibody diluted at 1:200