

## Anti-UBE2V1 Polyclonal Antibody

Cat: K108114P

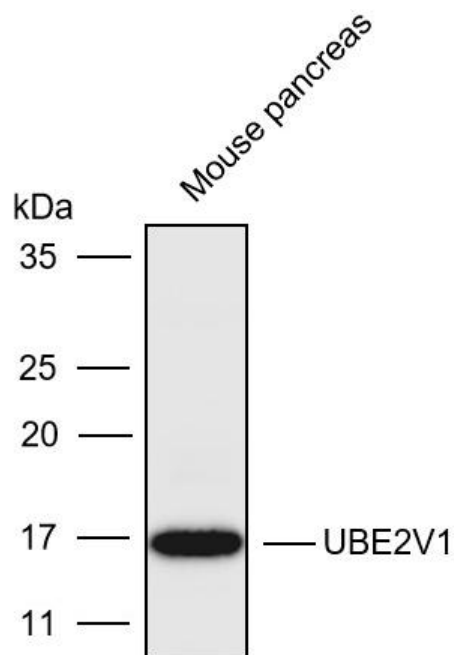
### Summary:

【Product name】 : Anti-UBE2V1 antibody	【Source】 : Rabbit
【Isotype】 : IgG	【Species reactivity】 : Human Mouse Rat
【Swiss Prot】 : Q13404	【Gene ID】 : 7335
【Calculated】 : MW:12/16/19/26kDa	【Observed】 : MW:17kDa
【Purification】 : Affinity purification	
【Tested applications】 : WB IHC	
【Recommended dilution】 : WB 1:1000-3000. IHC1:50-200.	
【WB Positive sample】 : Mouse pancreas	
【IHC Positive sample】 : Human breast cancer	
【Subcellular location】 : Nucleus	
【Immunogen】 : Recombinant protein of human UBE2V1	
【Storage】 : Shipped at 4°C. Upon delivery aliquot and store at -20°C	

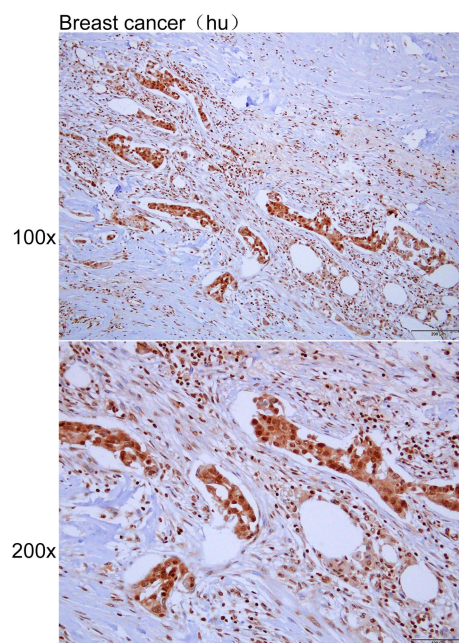
### Background:

Ubiquitin-conjugating E2 enzyme variant proteins constitute a distinct subfamily within the E2 protein family. They have sequence similarity to other ubiquitin-conjugating enzymes but lack the conserved cysteine residue that is critical for the catalytic activity of E2s. The protein encoded by this gene is located in the nucleus and can cause transcriptional activation of the human FOS proto-oncogene. It is thought to be involved in the control of differentiation by altering cell cycle behavior. Alternatively spliced transcript variants encoding multiple isoforms have been described for this gene, and multiple pseudogenes of this gene have been identified. Co-transcription of this gene and the neighboring upstream gene generates a rare transcript (Kua-UEV), which encodes a fusion protein comprised of sequence sharing identity with each individual gene product..

## Verified picture



Western blot analysis with UBE2V1 antibody diluted at 1:2000; Lane: Mouse pancreas



Immunohistochemistry of paraffin-embedded Human breast cancer with UBE2V1 antibody diluted at 1:100