

## Anti-POLR1D Polyclonal Antibody

Cat: K108115P

### Summary:

---

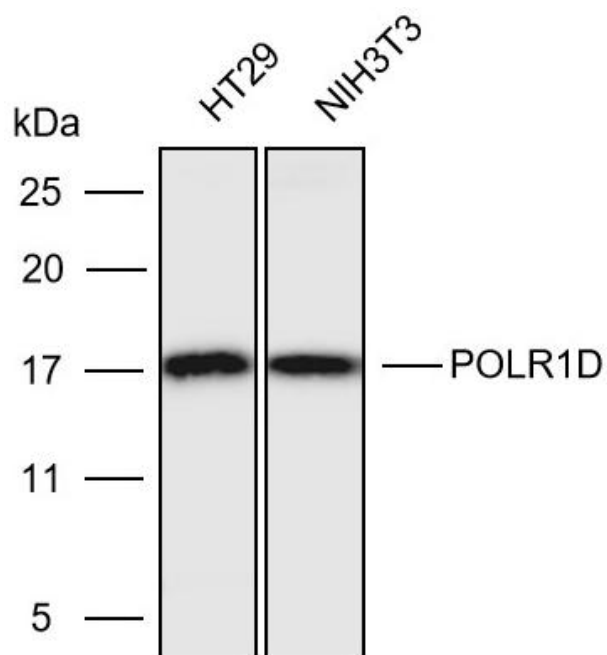
<b>【Product name】</b> : Anti-POLR1D antibody	<b>【Source】</b> : Rabbit
<b>【Isotype】</b> : IgG	<b>【Species reactivity】</b> : Human Mouse Rat
<b>【Swiss Prot】</b> : P0DPB6	<b>【Gene ID】</b> : 51082
<b>【Calculated】</b> : MW:15kDa	<b>【Observed】</b> : MW:17kDa
<b>【Purification】</b> : Affinity purification	
<b>【Tested applications】</b> : WB	
<b>【Recommended dilution】</b> : WB 1:1000-3000.	
<b>【WB Positive sample】</b> : HT29,NIH3T3	
<b>【Subcellular location】</b> : Cytoplasm Nucleus	
<b>【Immunogen】</b> : Recombinant protein of human POLR1D	
<b>【Storage】</b> : Shipped at 4°C. Upon delivery aliquot and store at -20°C	

### Background:

---

The protein encoded by this gene is a component of the RNA polymerase I and RNA polymerase III complexes, which function in the synthesis of ribosomal RNA precursors and small RNAs, respectively. Mutations in this gene are a cause of Treacher Collins syndrome (TCS), a craniofacial development disorder. Alternative splicing results in multiple transcript variants.

## Verified picture



Western blot analysis with POLR1D antibody diluted at 1:2000; Lane: HT29,NIH3T3