

## Anti-MRS2 Polyclonal Antibody

Cat: K108118P

### Summary:

---

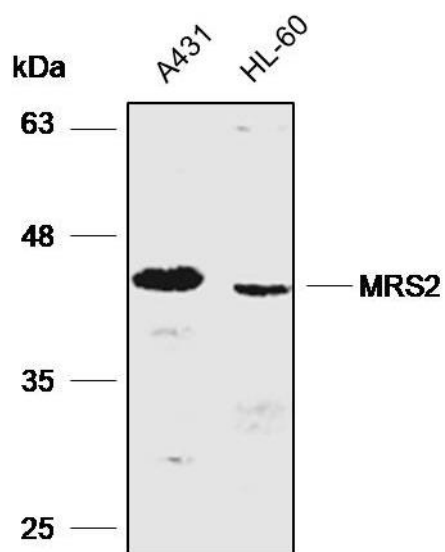
<b>【Product name】</b> : Anti-MRS2 antibody	<b>【Source】</b> : Rabbit
<b>【Isotype】</b> : IgG	<b>【Species reactivity】</b> : Human Mouse Rat
<b>【Swiss Prot】</b> : Q9HD23	<b>【Gene ID】</b> : 57380
<b>【Calculated】</b> : MW:13/46/50kDa	<b>【Observed】</b> : MW:43kDa
<b>【Purification】</b> : Affinity purification	
<b>【Tested applications】</b> : WB	
<b>【Recommended dilution】</b> : WB 1:1000-3000.	
<b>【WB Positive sample】</b> : A431,HL-60	
<b>【Subcellular location】</b> : Cytoplasm	
<b>【Immunogen】</b> : Recombinant protein of human MRS2	
<b>【Storage】</b> : Shipped at 4°C. Upon delivery aliquot and store at -20°C	

### Background:

---

Magnesium transporter that mediates the influx of magnesium into the mitochondrial matrix. Required for normal expression of the mitochondrial respiratory complex I subunits.

## Verified picture



Western blot analysis with MRS2 antibody  
diluted at 1:2000; Lane: A431, HL-60