

## Anti-SNCG Polyclonal Antibody

Cat: K108130P

### Summary:

---

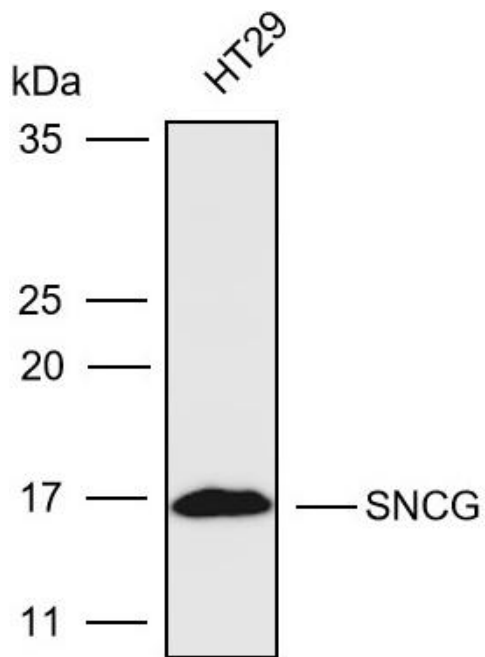
【Product name】 : Anti-SNCG antibody	【Source】 : Rabbit
【Isotype】 : IgG	【Species reactivity】 : Human Mouse Rat
【Swiss Prot】 : O76070	【Gene ID】 : 6623
【Calculated】 : MW:13kDa	【Observed】 : MW:16kDa
【Purification】 : Affinity purification	
【Tested applications】 : WB IHC	
【Recommended dilution】 : WB 1:1000-3000. IHC1:50-200.	
【WB Positive sample】 : HT29	
【IHC Positive sample】 : Human pancreatic cancer	
【Subcellular location】 : Cytoplasm	
【Immunogen】 : Recombinant protein of human SNCG	
【Storage】 : Shipped at 4°C. Upon delivery aliquot and store at -20°C	

### Background:

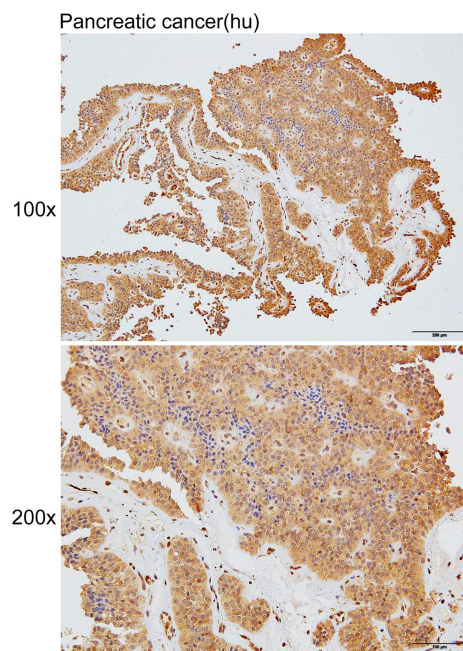
---

This gene encodes a member of the synuclein family of proteins which are believed to be involved in the pathogenesis of neurodegenerative diseases. Mutations in this gene have also been associated with breast tumor development.

## Verified picture



Western blot analysis with SNCG antibody  
diluted at 1:2000; Lane: HT29



Immunohistochemistry of paraffin-embedded  
Human pancreatic cancer with SNCG antibody  
diluted at 1:100