

Anti-RYBP Polyclonal Antibody

Cat: K108142P

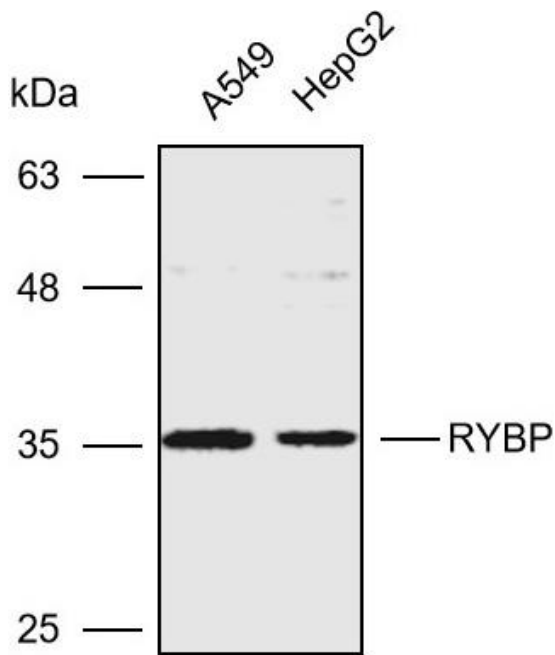
Summary:

【Product name】 : Anti-RYBP antibody	【Source】 : Rabbit
【Isotype】 : IgG	【Species reactivity】 : Human Mouse Rat
【Swiss Prot】 : Q8N488	【Gene ID】 : 23429
【Calculated】 : MW:25kDa	【Observed】 : MW:35kDa
【Purification】 : Affinity purification	
【Tested applications】 : WB IHC	
【Recommended dilution】 : WB 1:1000-3000. IHC1:50-200.	
【WB Positive sample】 : A549,HepG2	
【IHC Positive sample】 : Human prostate cancer	
【Subcellular location】 : Nucleus	
【Immunogen】 : Recombinant protein of human RYBP	
【Storage】 : Shipped at 4°C. Upon delivery aliquot and store at -20°C	

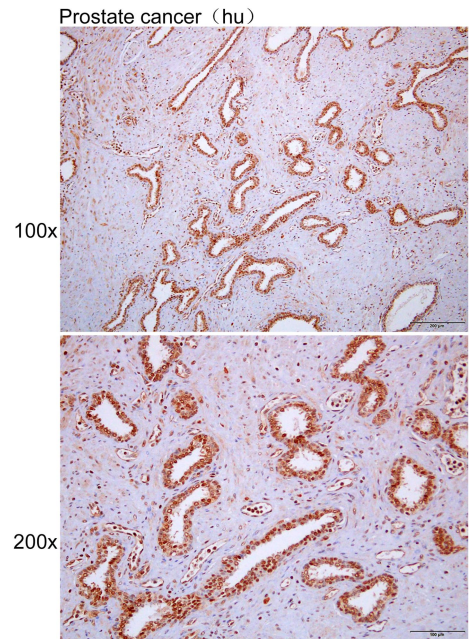
Background:

Component of a Polycomb group (PcG) multiprotein PRC1-like complex, a complex class required to maintain the transcriptionally repressive state of many genes, including Hox genes, throughout development. PcG PRC1-like complex acts via chromatin remodeling and modification of histones; it mediates monoubiquitination of histone H2A 'Lys-119', rendering chromatin heritably changed in its expressibility. Component of a PRC1-like complex that mediates monoubiquitination of histone H2A 'Lys-119' on the X chromosome and is required for normal silencing of one copy of the X chromosome in XX females. May stimulate ubiquitination of histone H2A 'Lys-119' by recruiting the complex to target sites (By similarity). Inhibits ubiquitination and subsequent degradation of TP53, and thereby plays a role in regulating transcription of TP53 target genes. May also regulate the ubiquitin-mediated proteasomal degradation of other proteins like FANK1 to regulate apoptosis. May be implicated in the regulation of the transcription as a repressor of the transcriptional activity of E4TF1. May bind to DNA (By similarity). May play a role in the repression of tumor growth and metastasis in breast cancer by down-regulating SRRM3.

Verified picture



Western blot analysis with RYBP antibody diluted at 1:2000; Lane: A549, HepG2



Immunohistochemistry of paraffin-embedded Human prostate cancer with RYBP antibody diluted at 1:100